



Folha de Dados

IDGED:

203/02/04/A

LOTE:

2207

AUTOR:

SECRETARIA DOS RECURSOS HÍDRICO – SRH; GOLDER ASSOCIATES; PIVOT

TÍTULO:

ESTUDOS DE ALTERNATIVA, VIABILIDADE E PROJETO BÁSICO DA ALTERNATIVA SELECIONADA DA BARRAGEM ARNEIROZ II

SUBTÍTULO:

TOMO II – RELATÓRIO DOS ESTUDOS BÁSICOS; VOLUME 4A – AEROFOTOS E FOTOS ÍNDICE NA ESCALA 1:100.000

GOVERNO DO ESTADO DO CEARÁ
SECRETARIA DOS RECURSOS HÍDRICOS - SRH



Lote 02207 - Prop Sem () Index ()
Projeto Nº 0203/02/1041A
Volume _____
Qtd. A4 _____ Qtd. A3 _____
Qtd. A2 _____ Qtd. A1 _____
Qtd. A0 _____ Outros _____

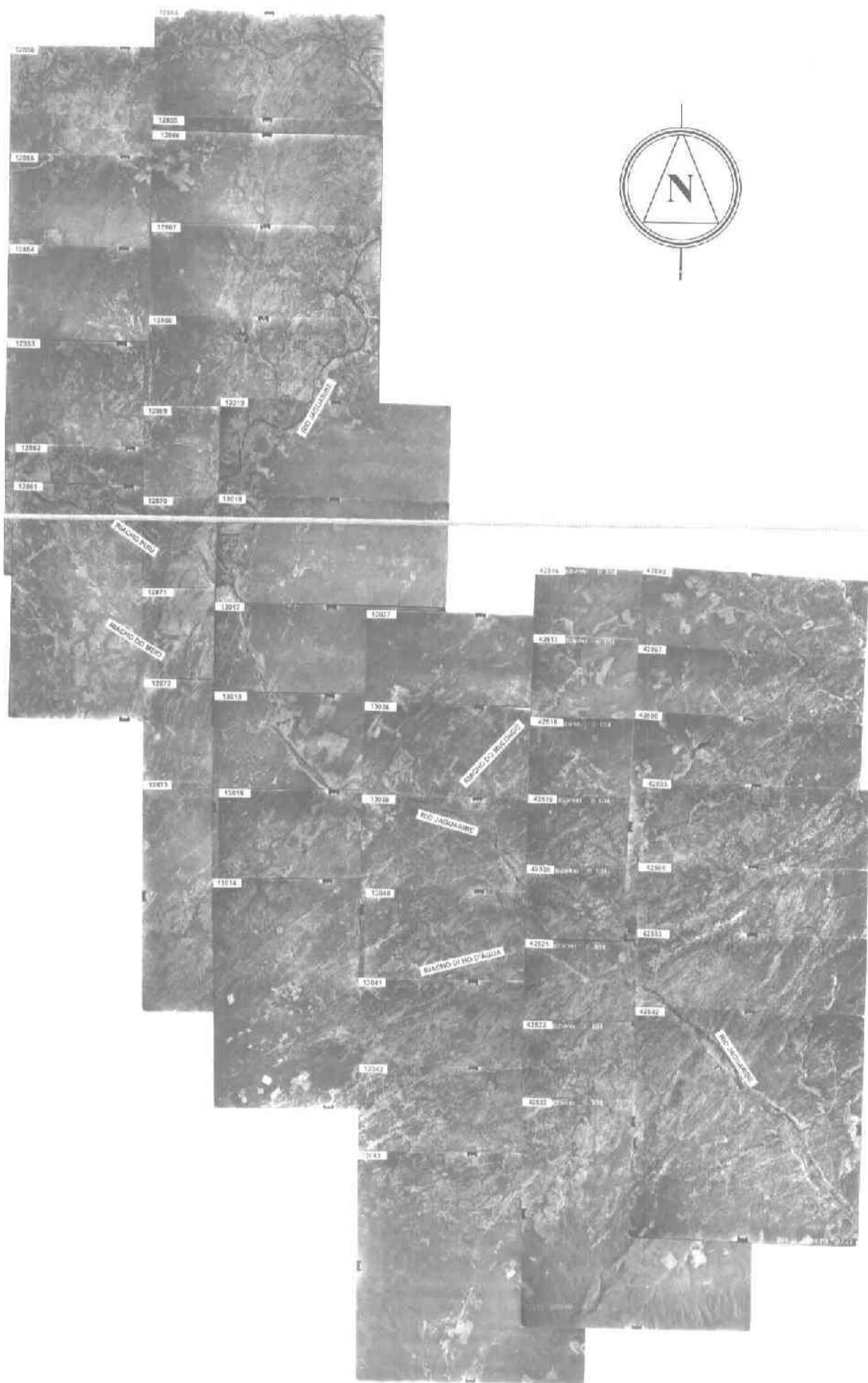
PROÁGUA

S E M I - Á R I O

BARRAGEM ARNEIROZ II - TOMO II - RELATÓRIO DE ESTUDOS BÁSICOS
VOLUME 4A - AEROFOTOS E FOTO-ÍNDICE NA ESCALA 1:100.000

Setembro - 2000





S R H - C E

BARRAGEM DE ARNEIROZ II
RIO JAGUARIBE

ESCALA DO VÔO - 1:25.000

ESCALA DO FOTOÍNDICE: 1:100.000

GOLDER ASSOCIATES BRASIL LTDA

VÔO EXECUTADO POR CRUZEIRO DO SUL S/A

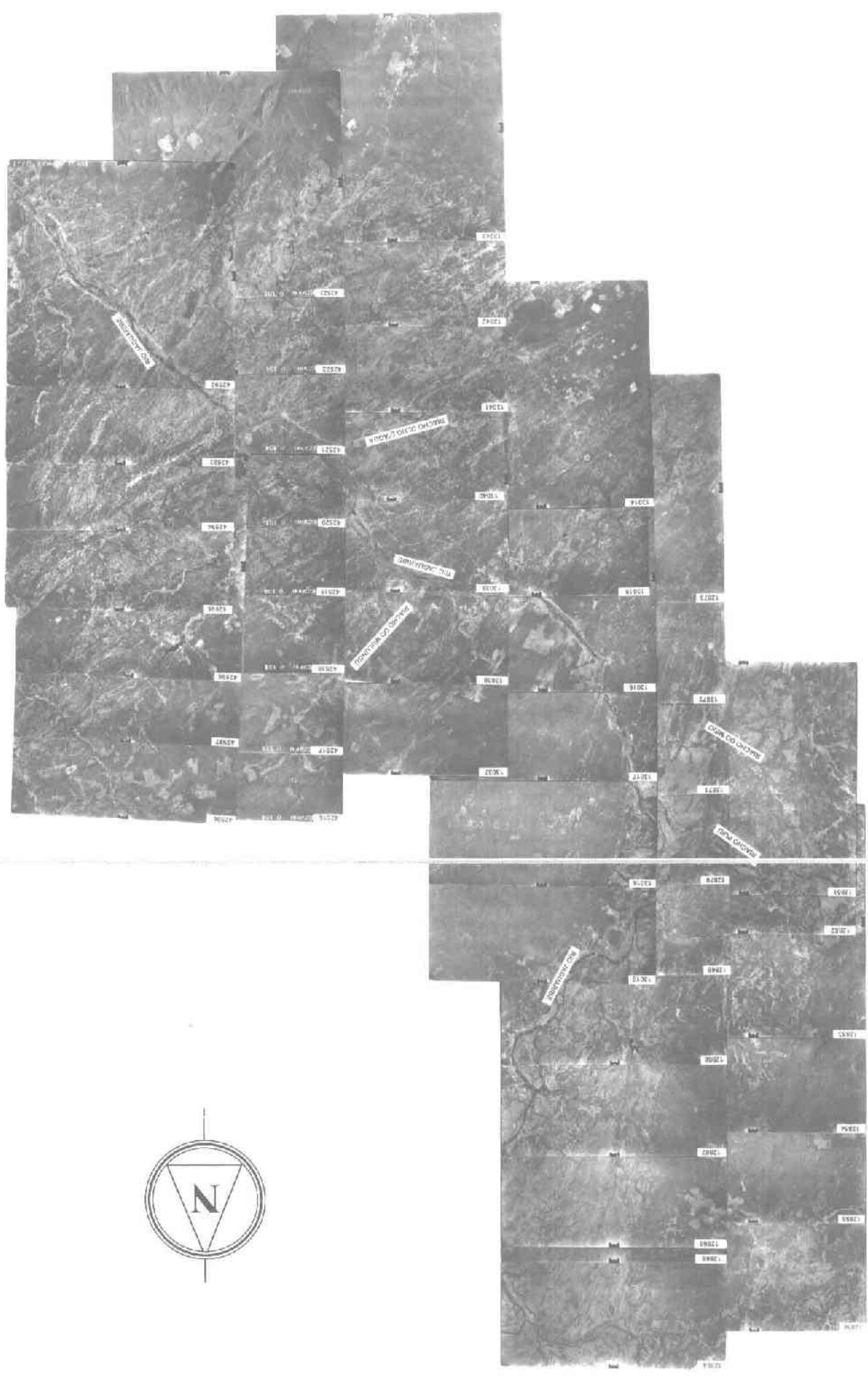


000003

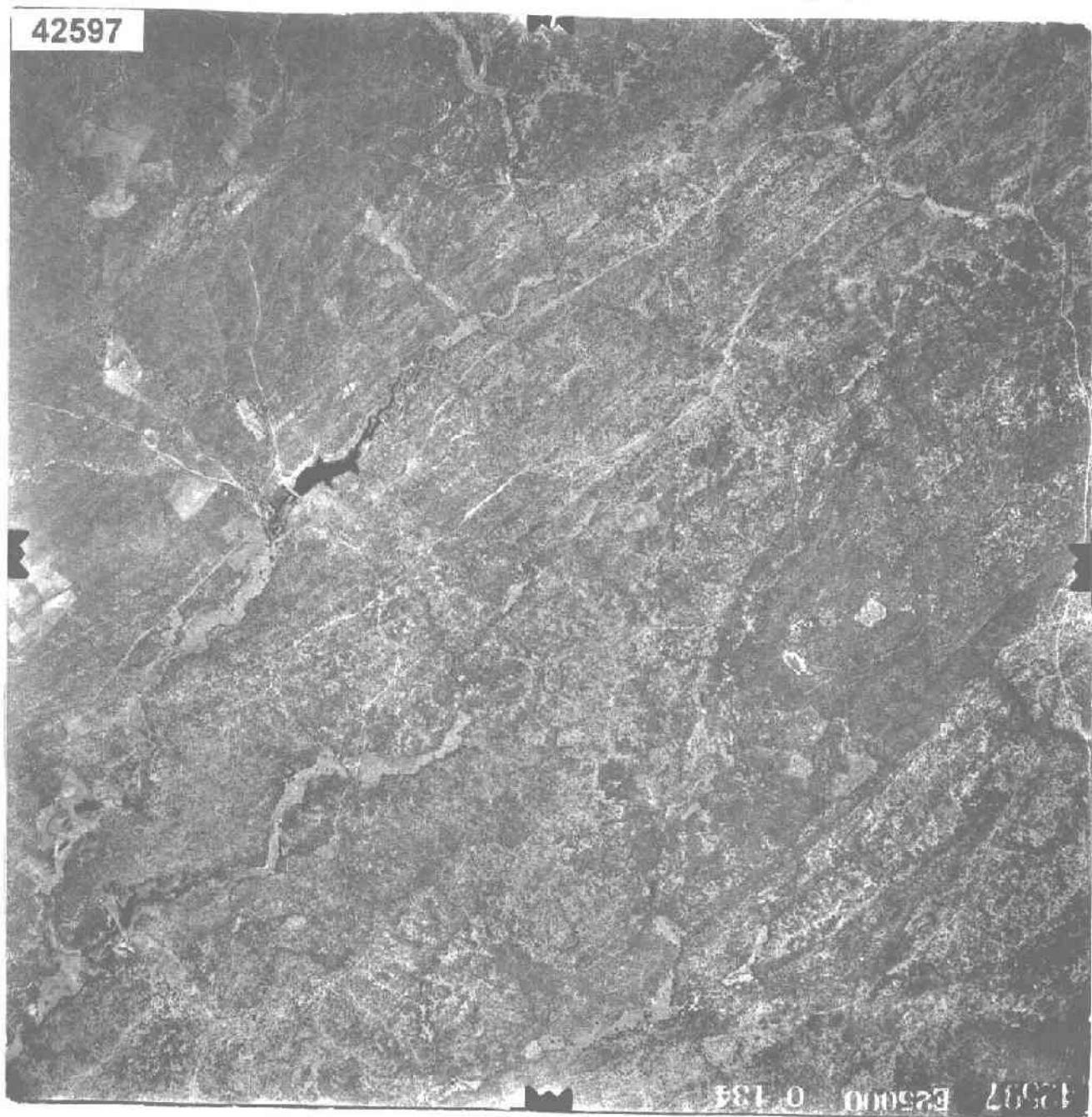


VÃO EXECUTADO POR CRUZEIRO DO SUL S/A

S R H - C E
BARRAGEM DE ARNEIROZ II
RIO JAGUARIBE
ESCALA DO VÃO - 1:25.000
ESCALA DO FOTOÍNDICE: 1:100.000
GOLDER ASSOCIATES BRASIL LTDA



42597



42597 Es5000 0-134

12508 E25000 0 134

42598

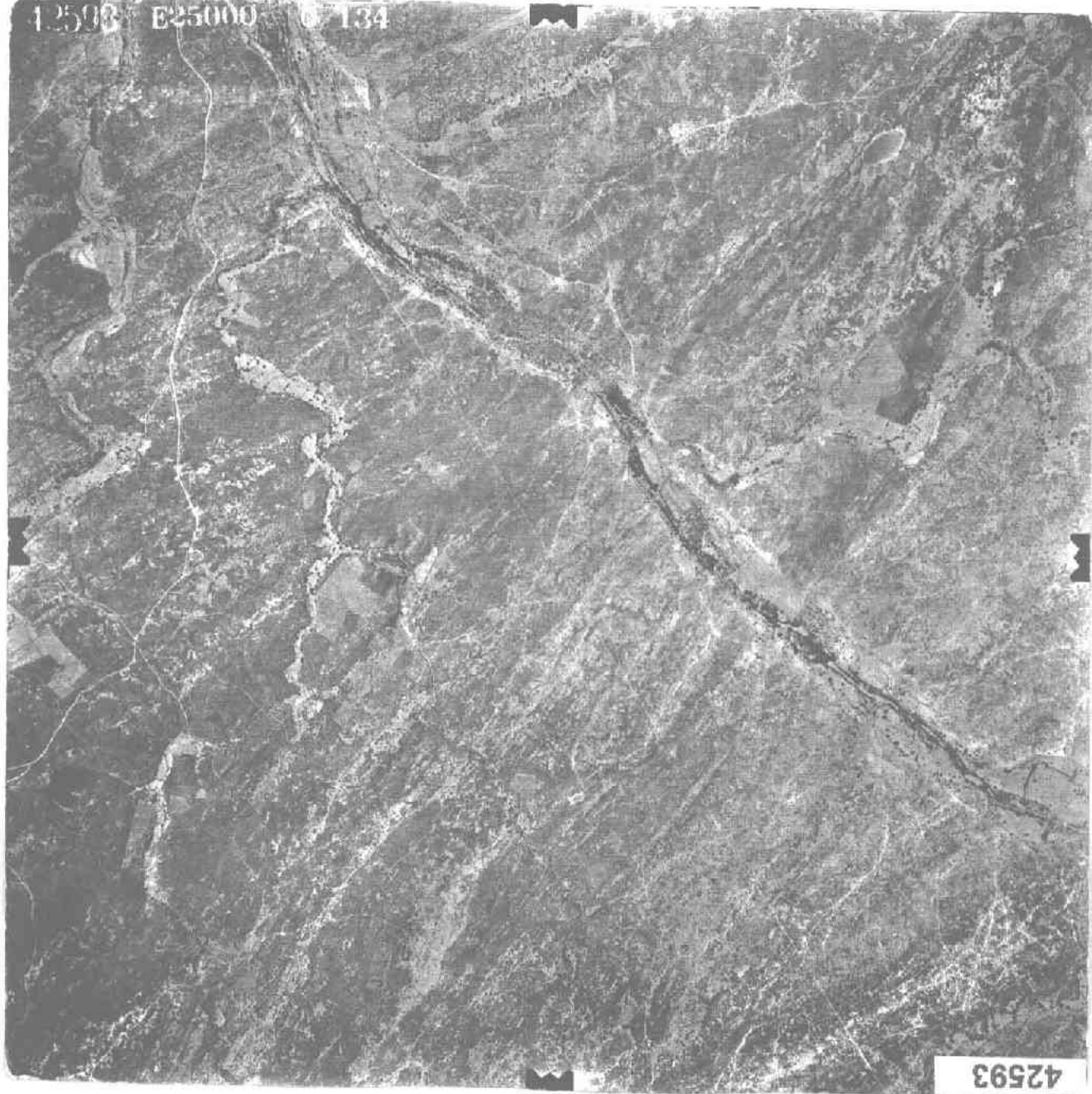
12505 B25000 0 134

42595

42596 E25000 0 134

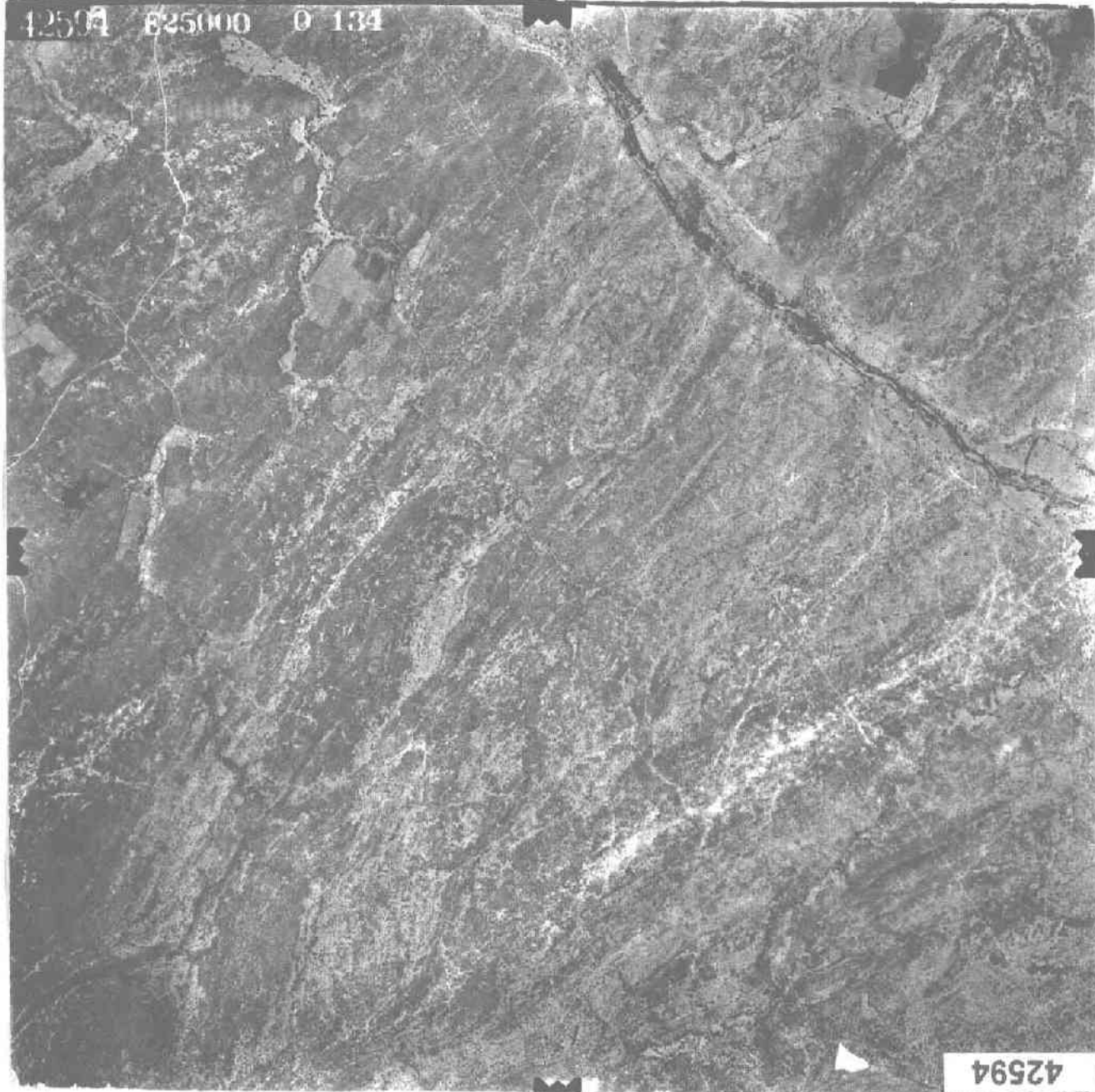
42596

12593 E25000 07134



42593

42594 E25000 0 134

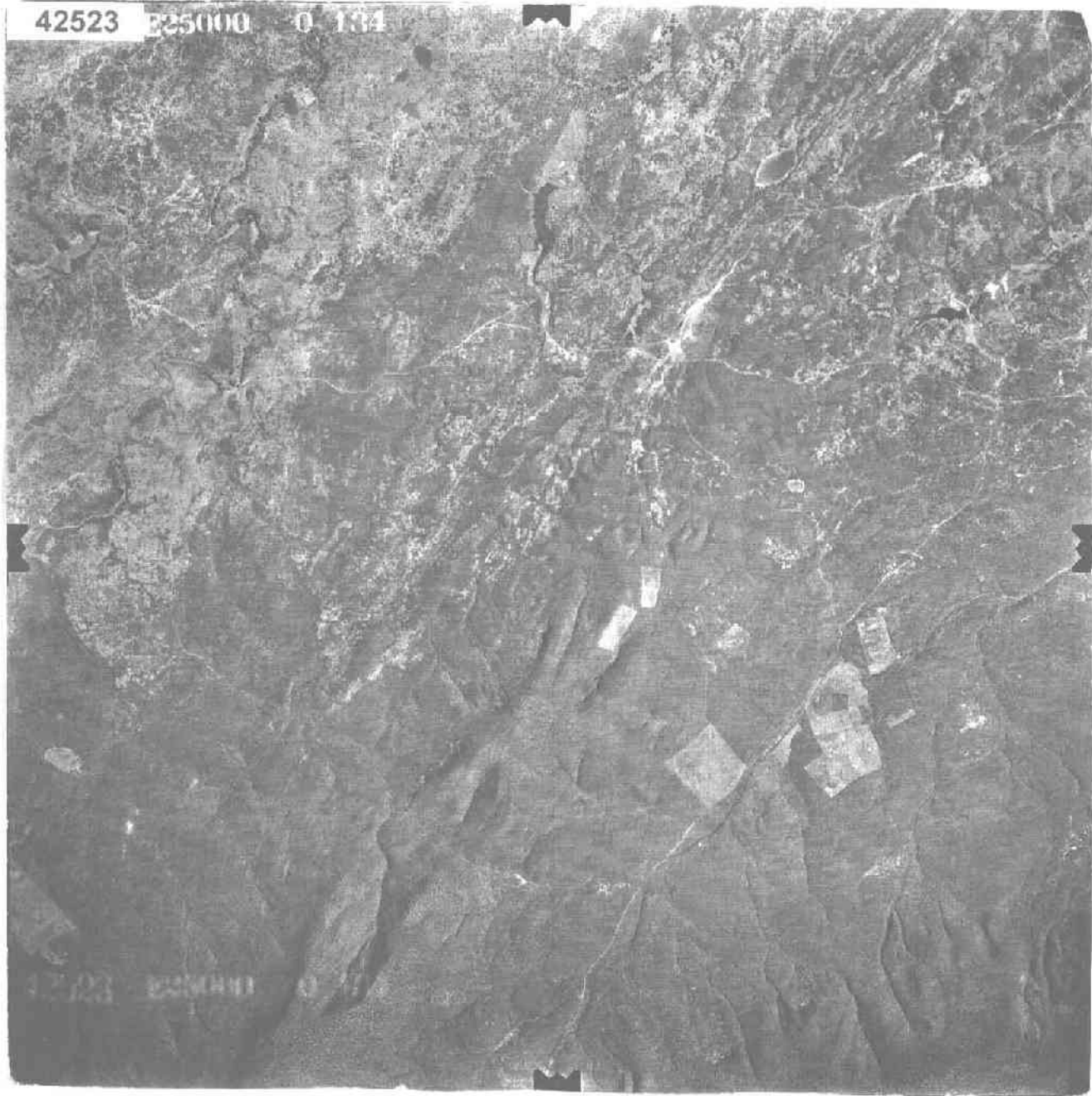


42594

42592 E25000 0 134

42592

42523 325000 0 134

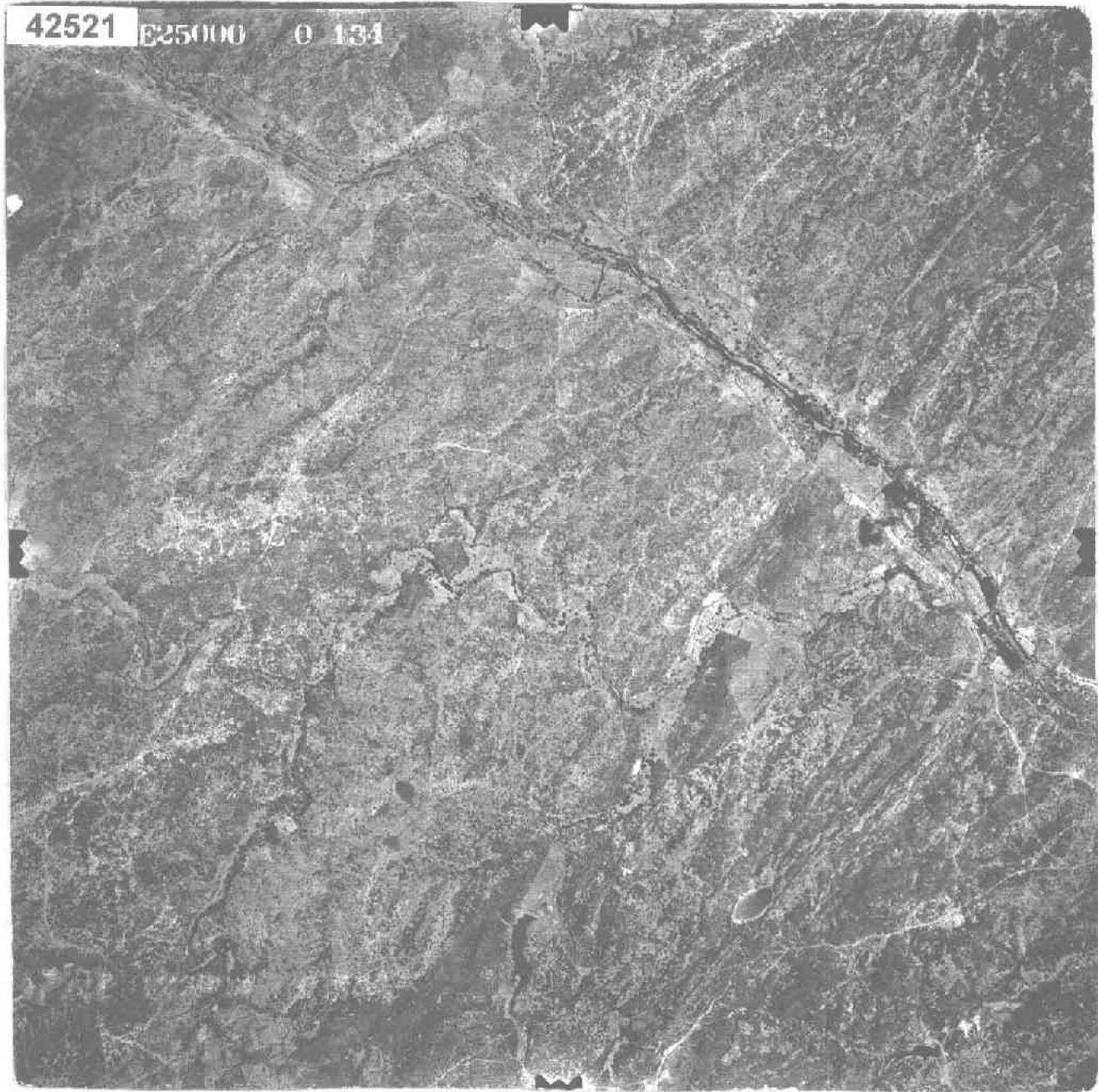


42523 325000 0

42521

025000

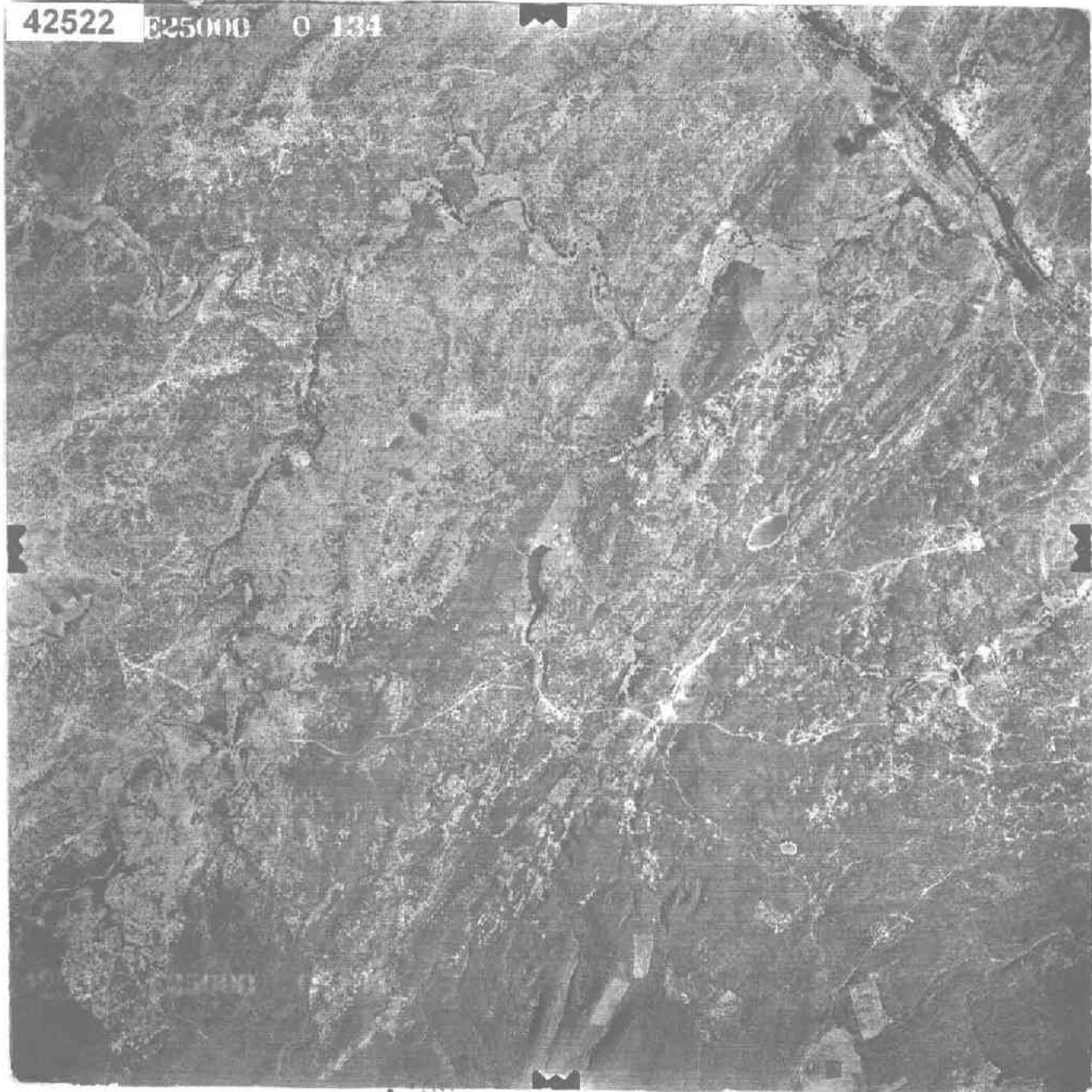
0 134



42522

825000

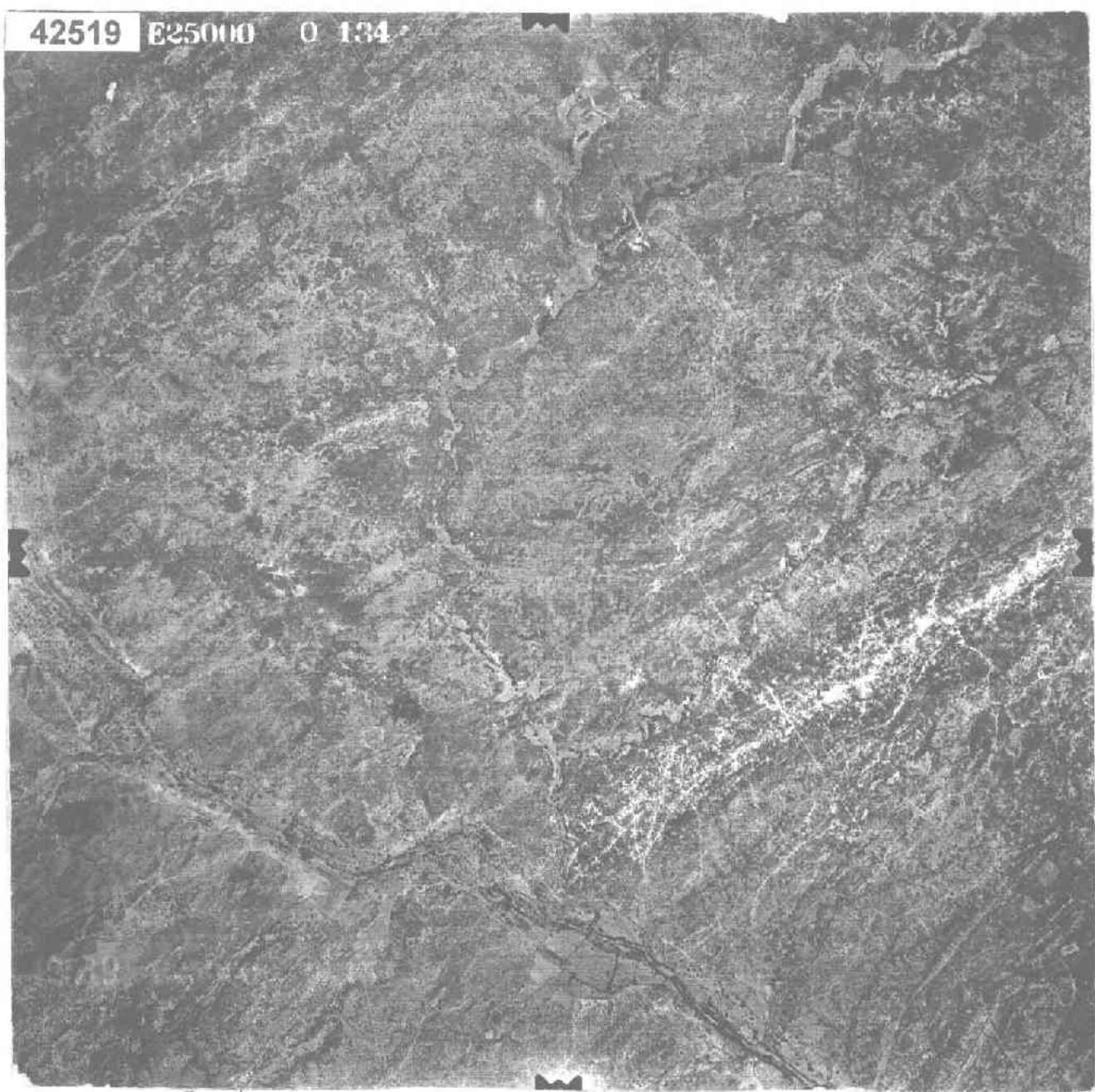
0 134



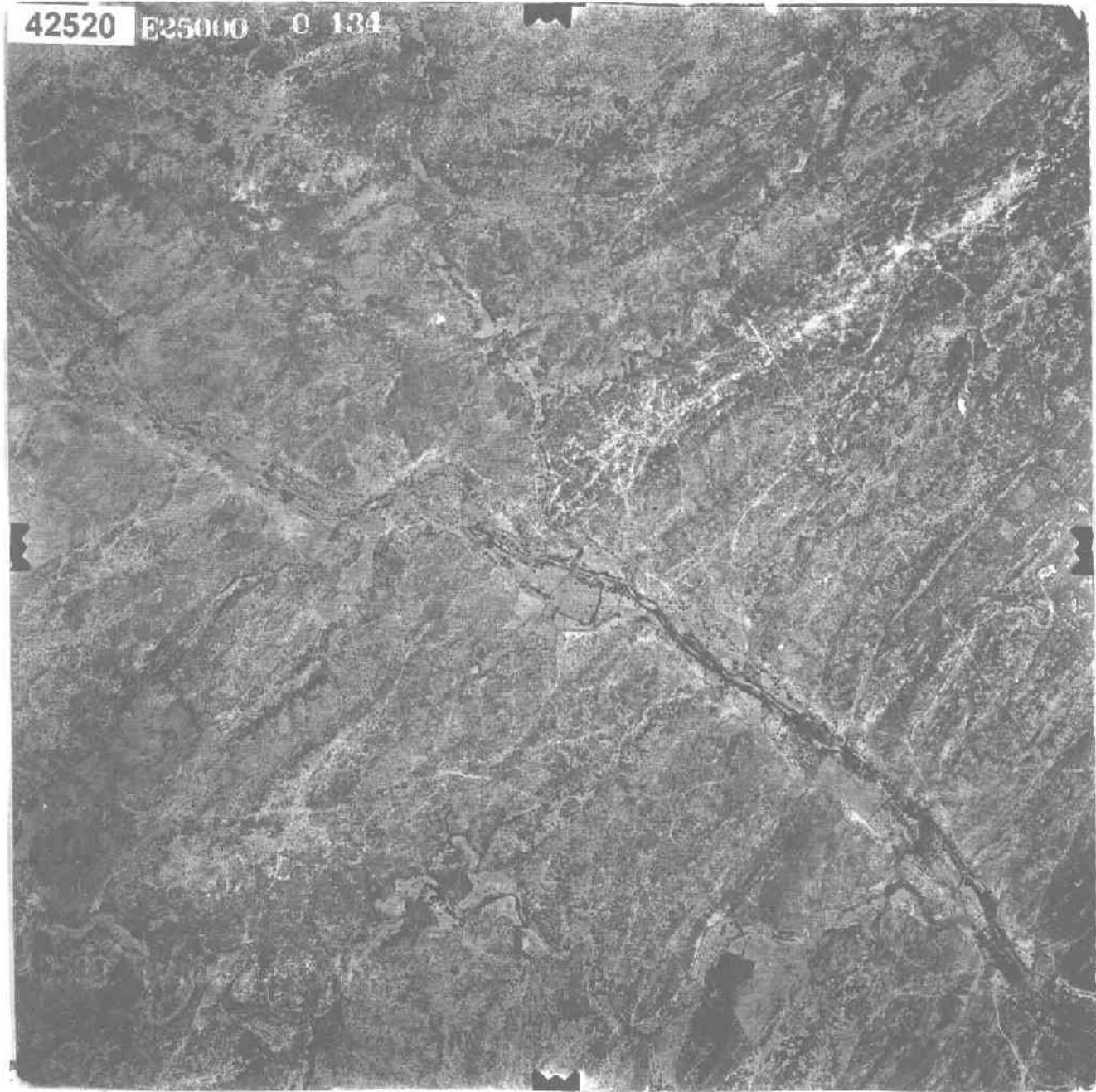
42519

E250110

0 134



42520 E25000 0 134



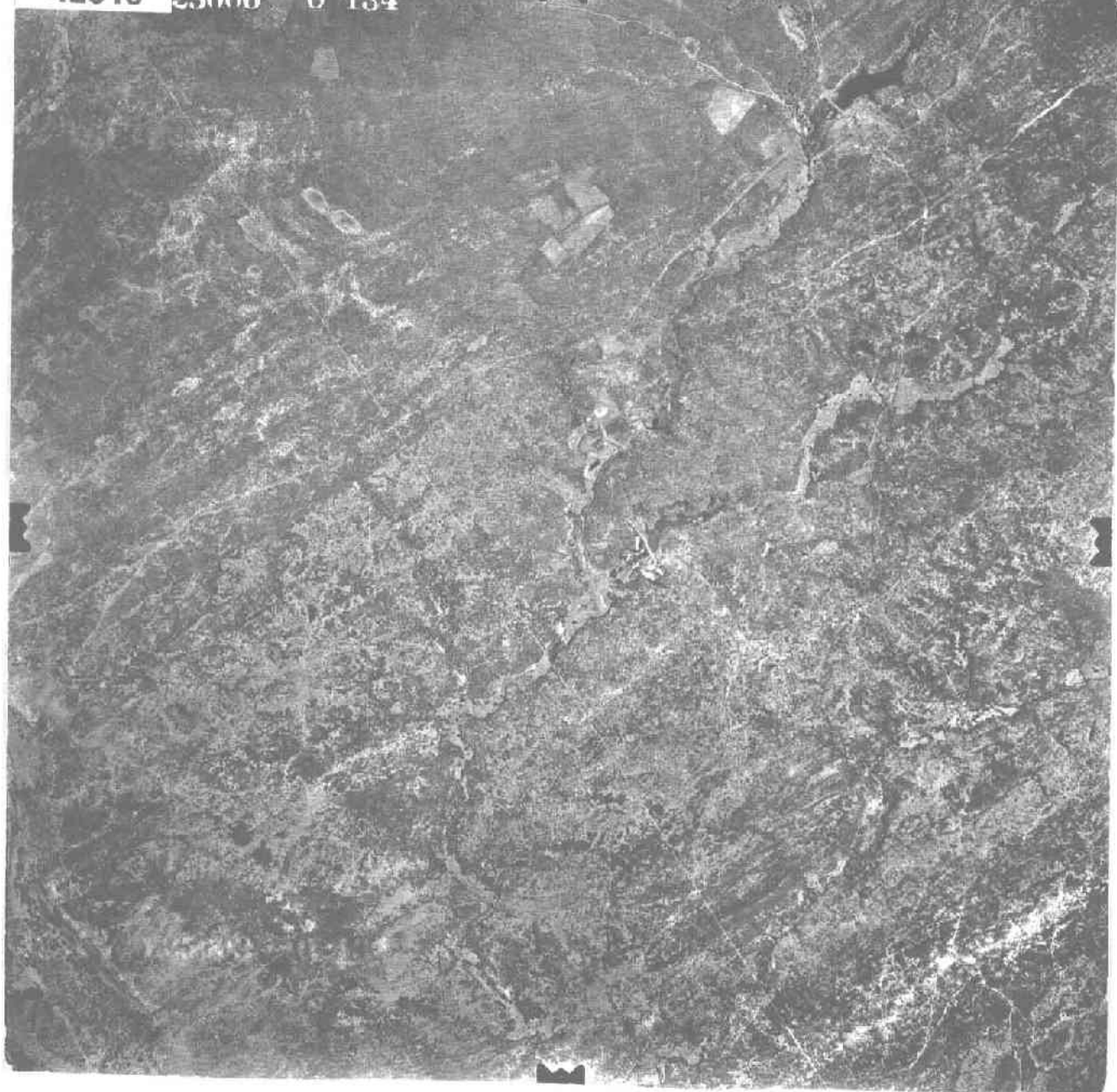
42517 325000 0 134



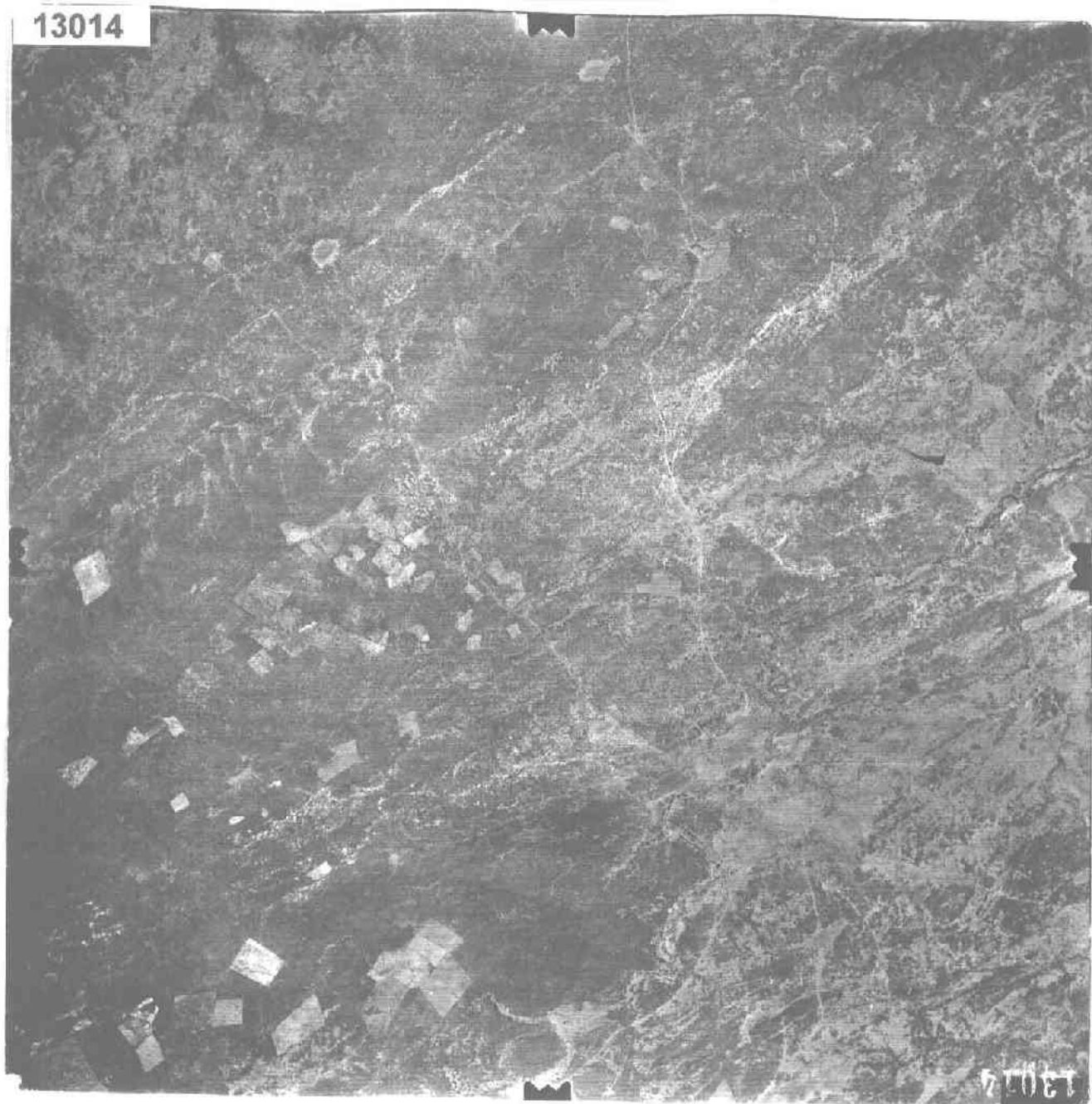
42518

25000

0 134

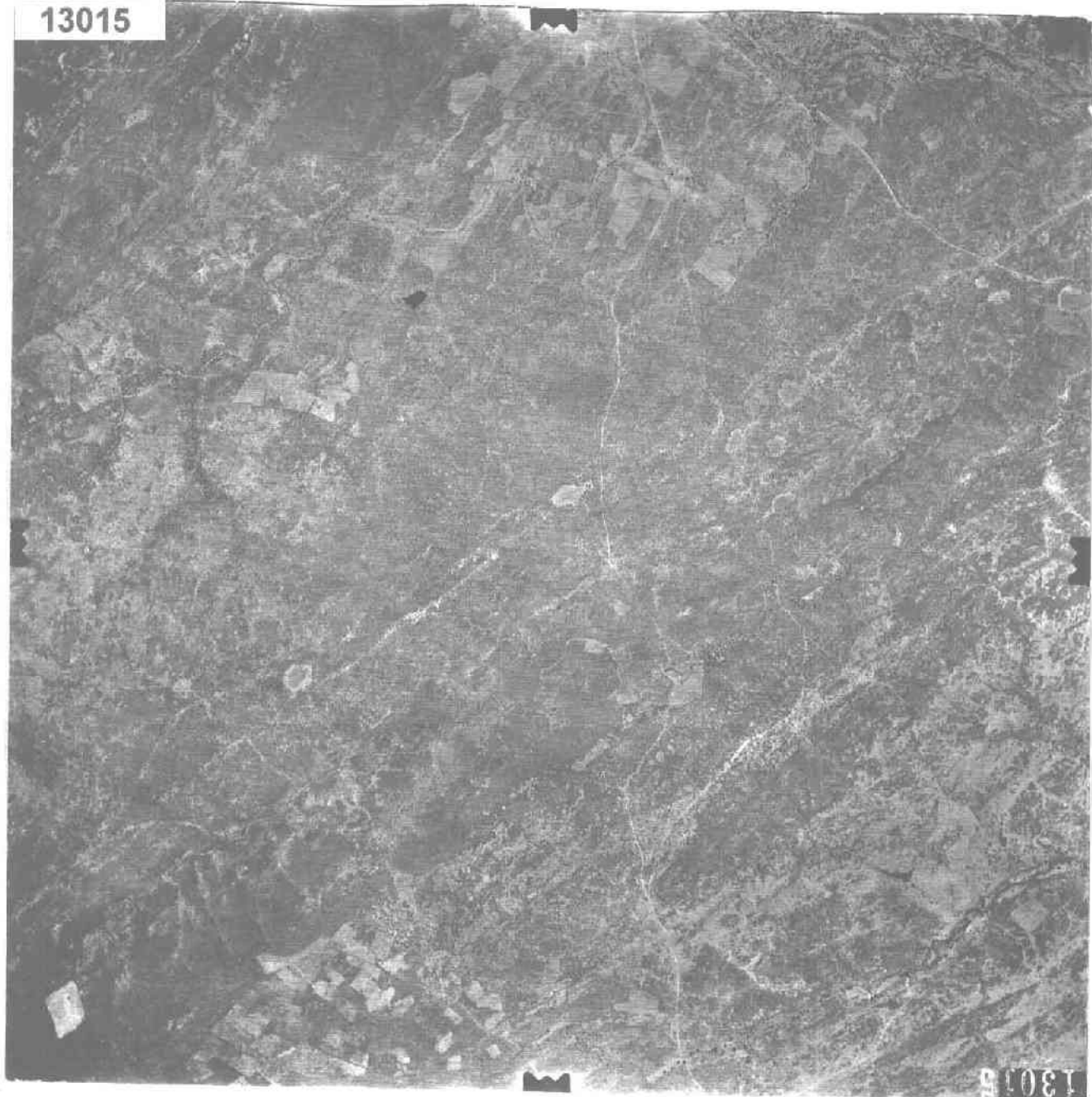


13014



13014

13015



13015

13016



13016

13017



13017

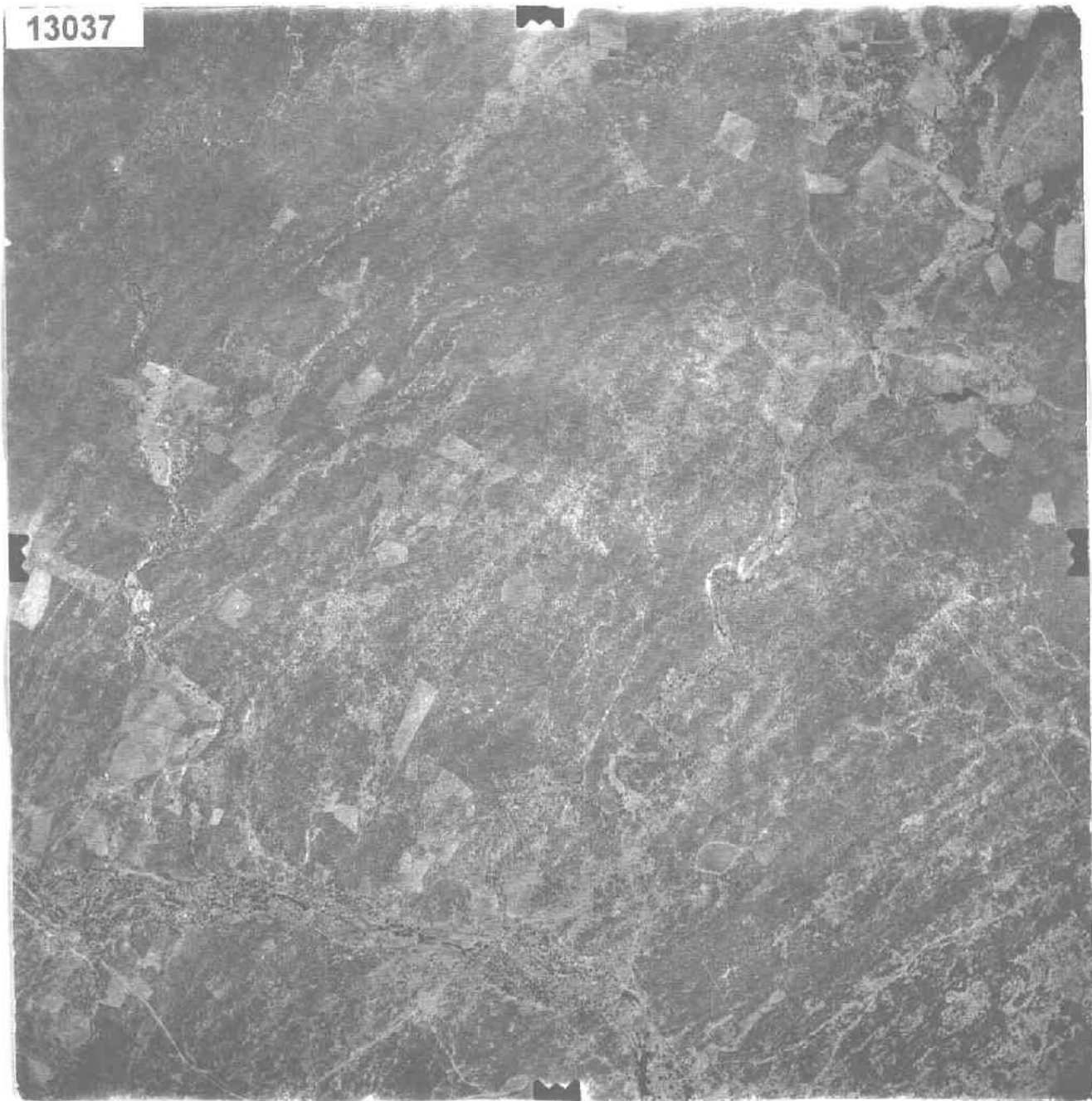
13018

13018

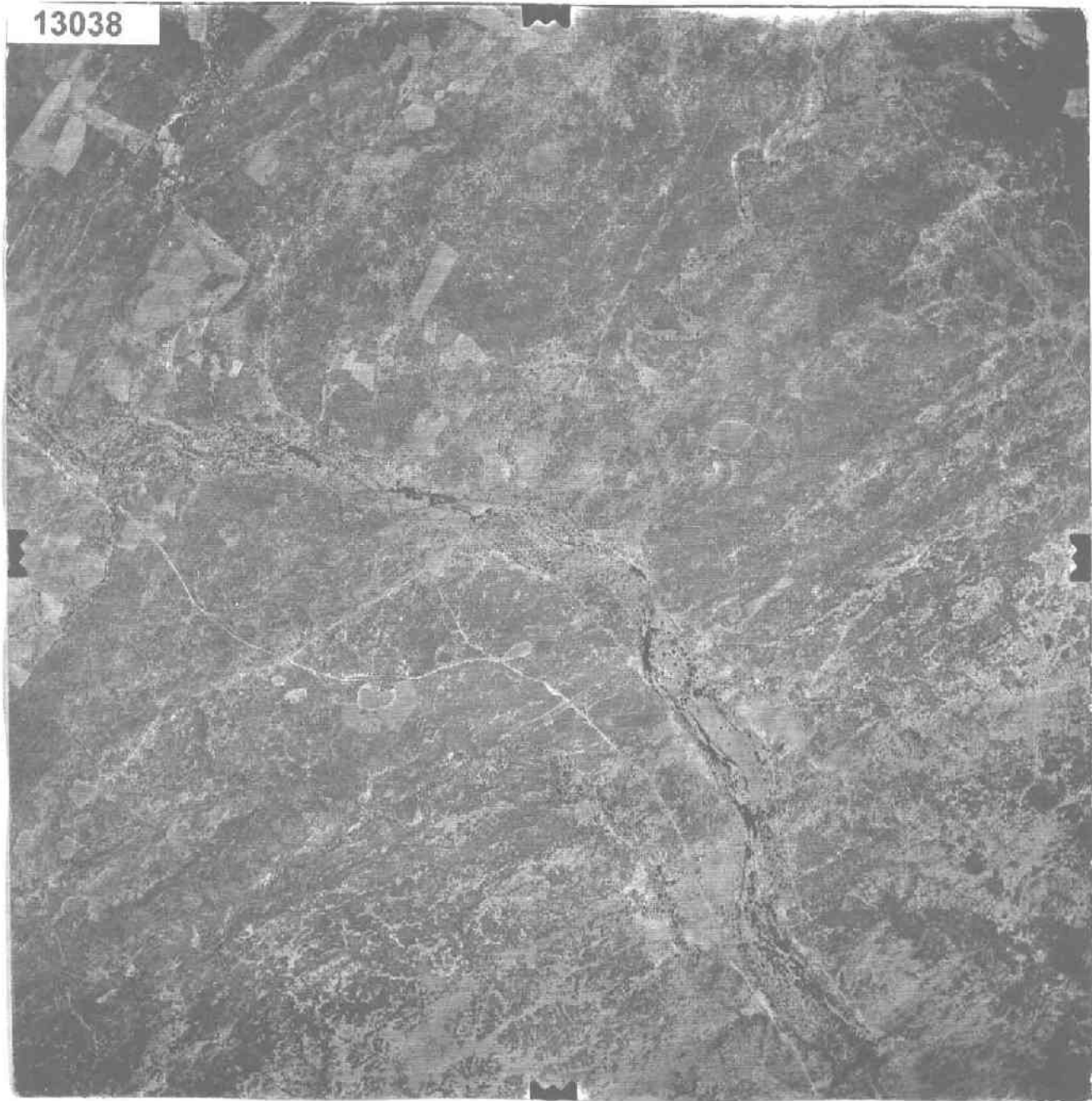
13019

13019

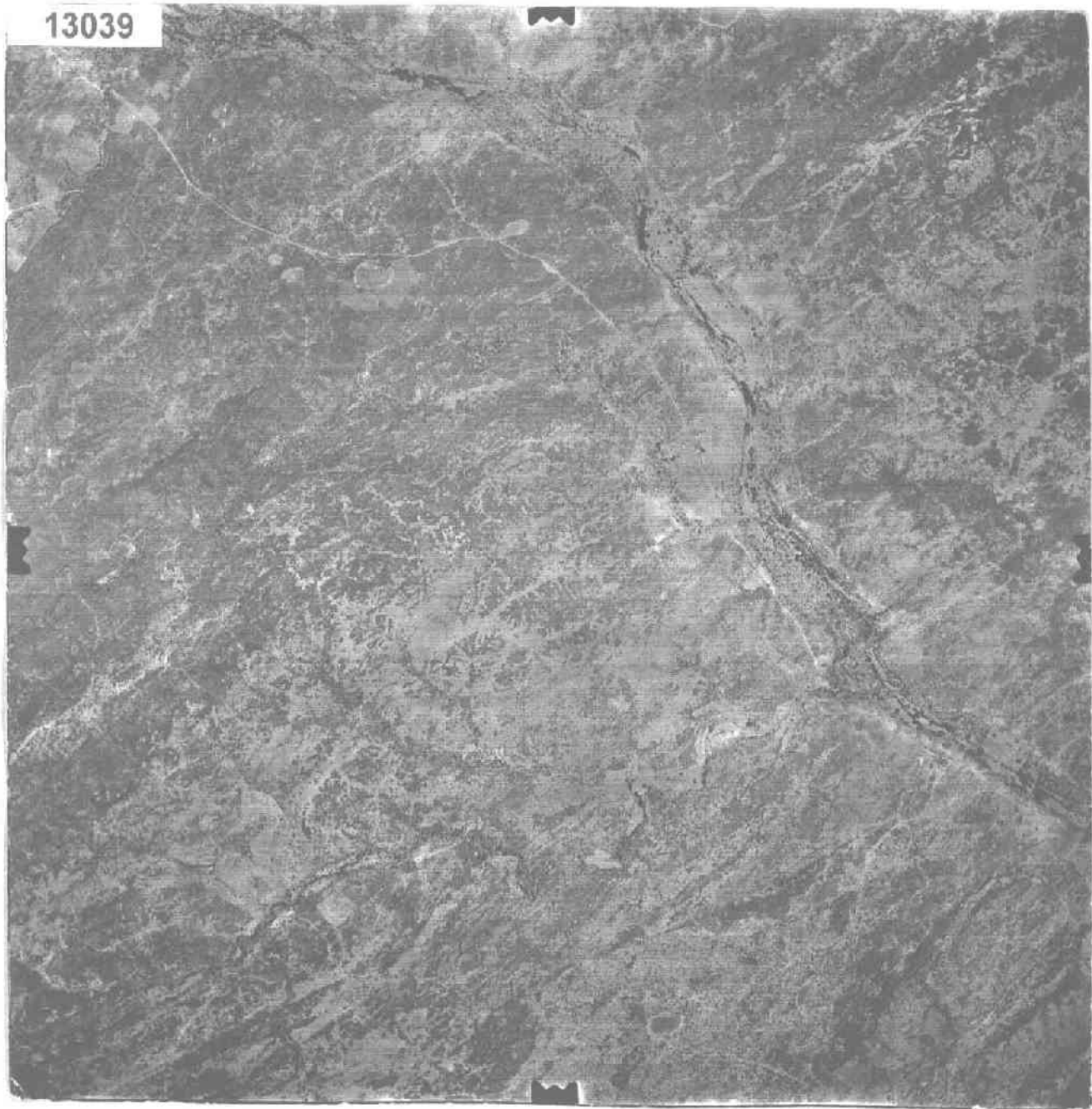
13037



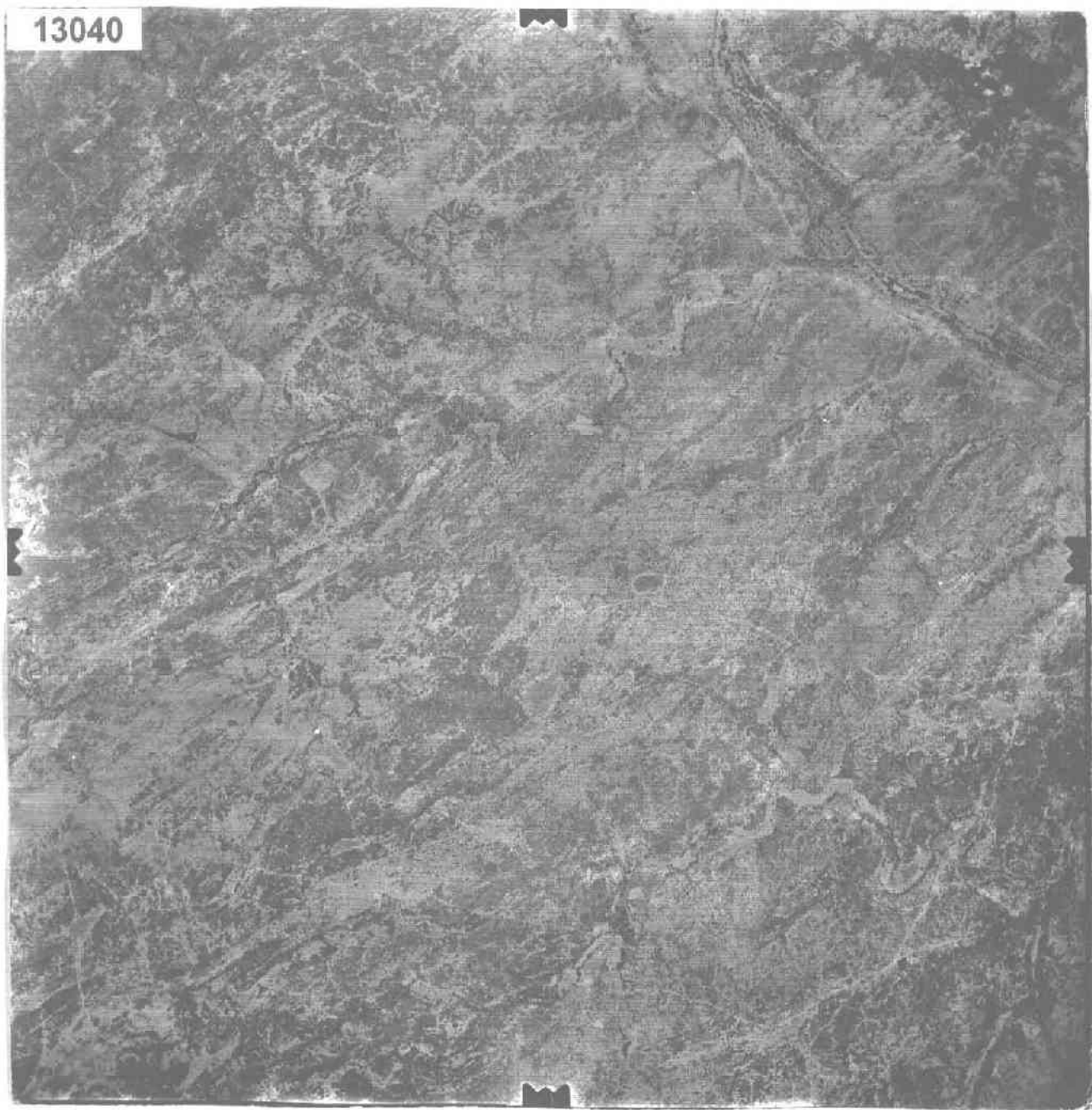
13038



13039



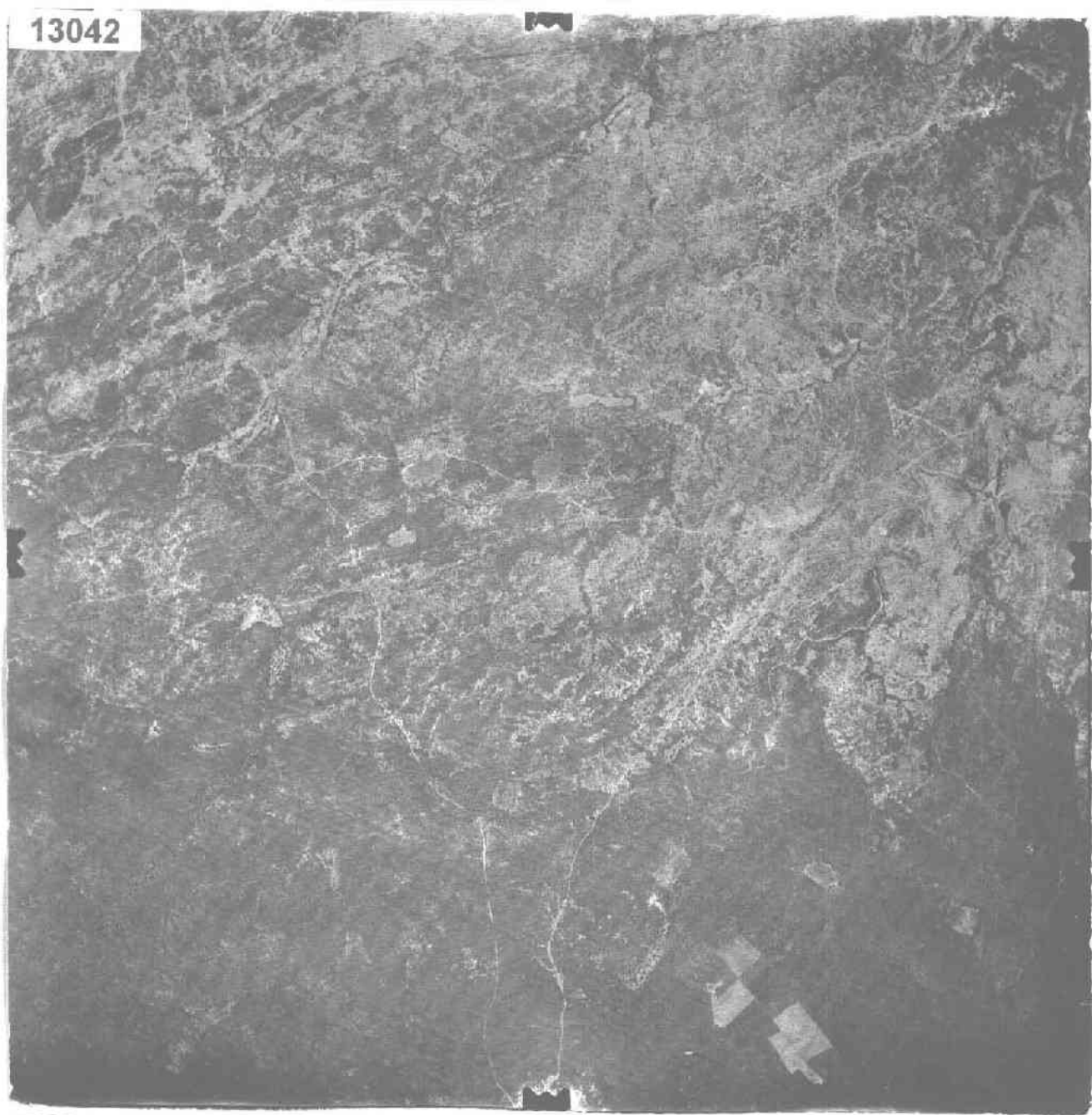
13040



13041



13042



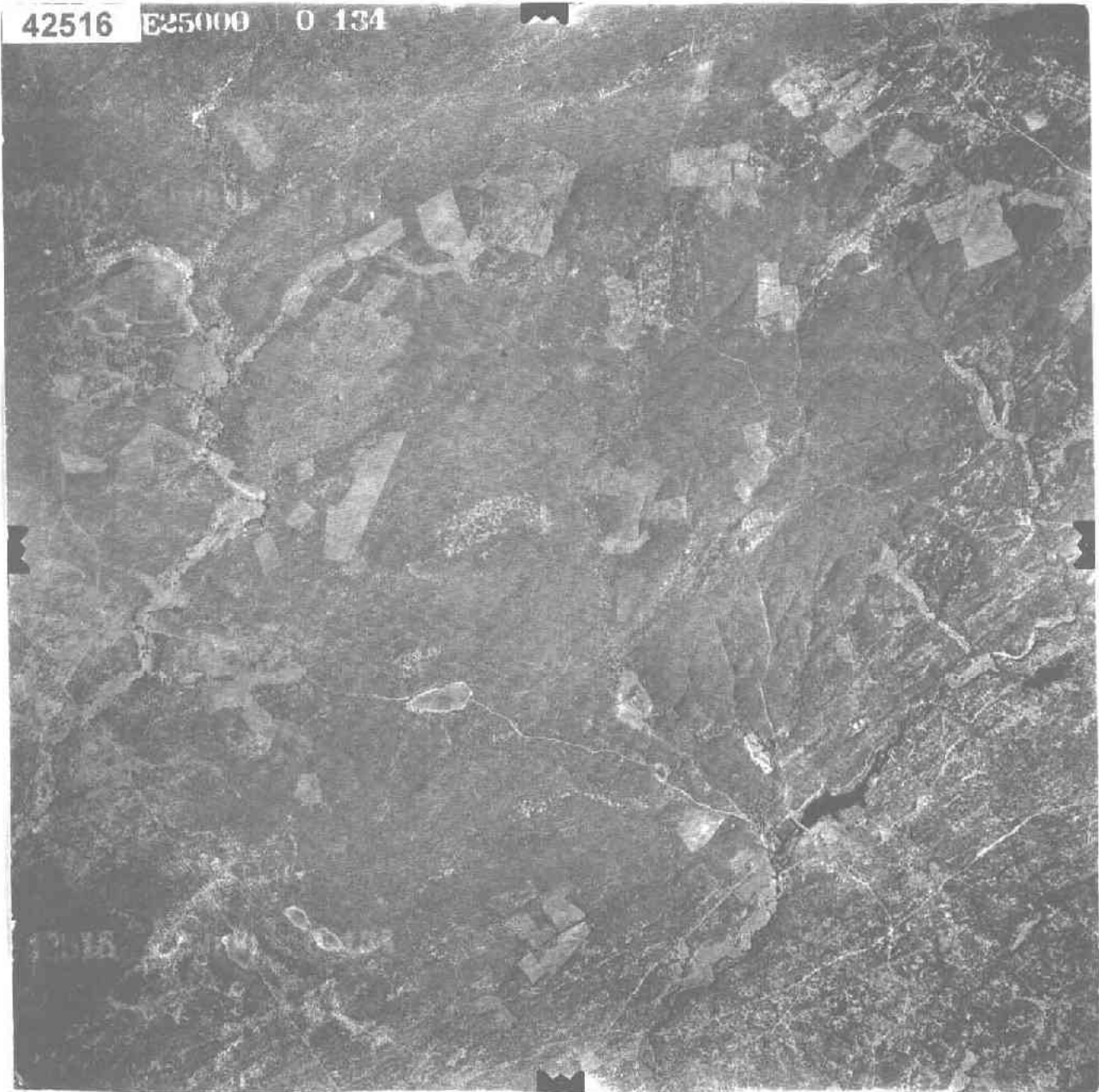
13043



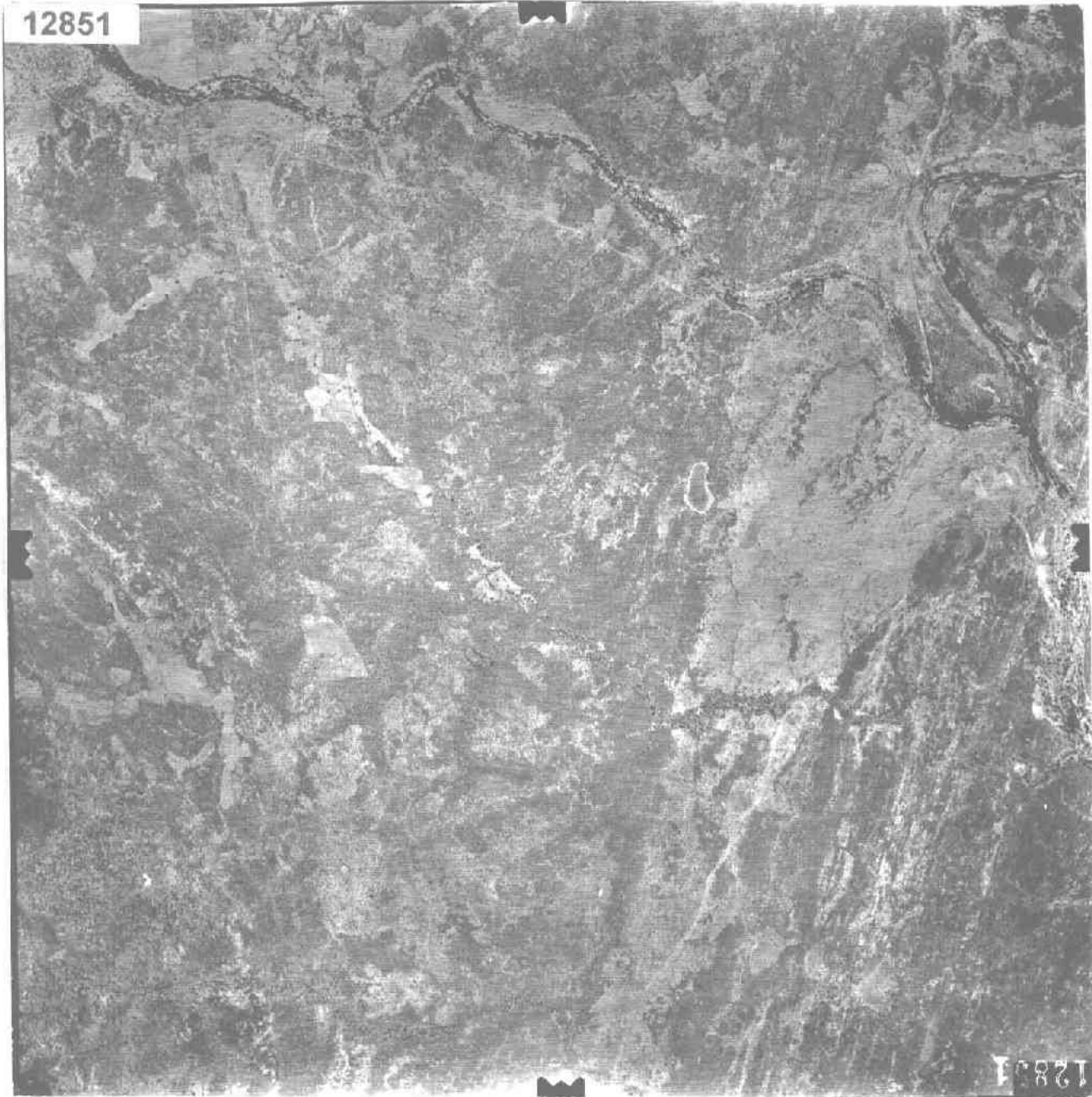
42516

E25000

0 134

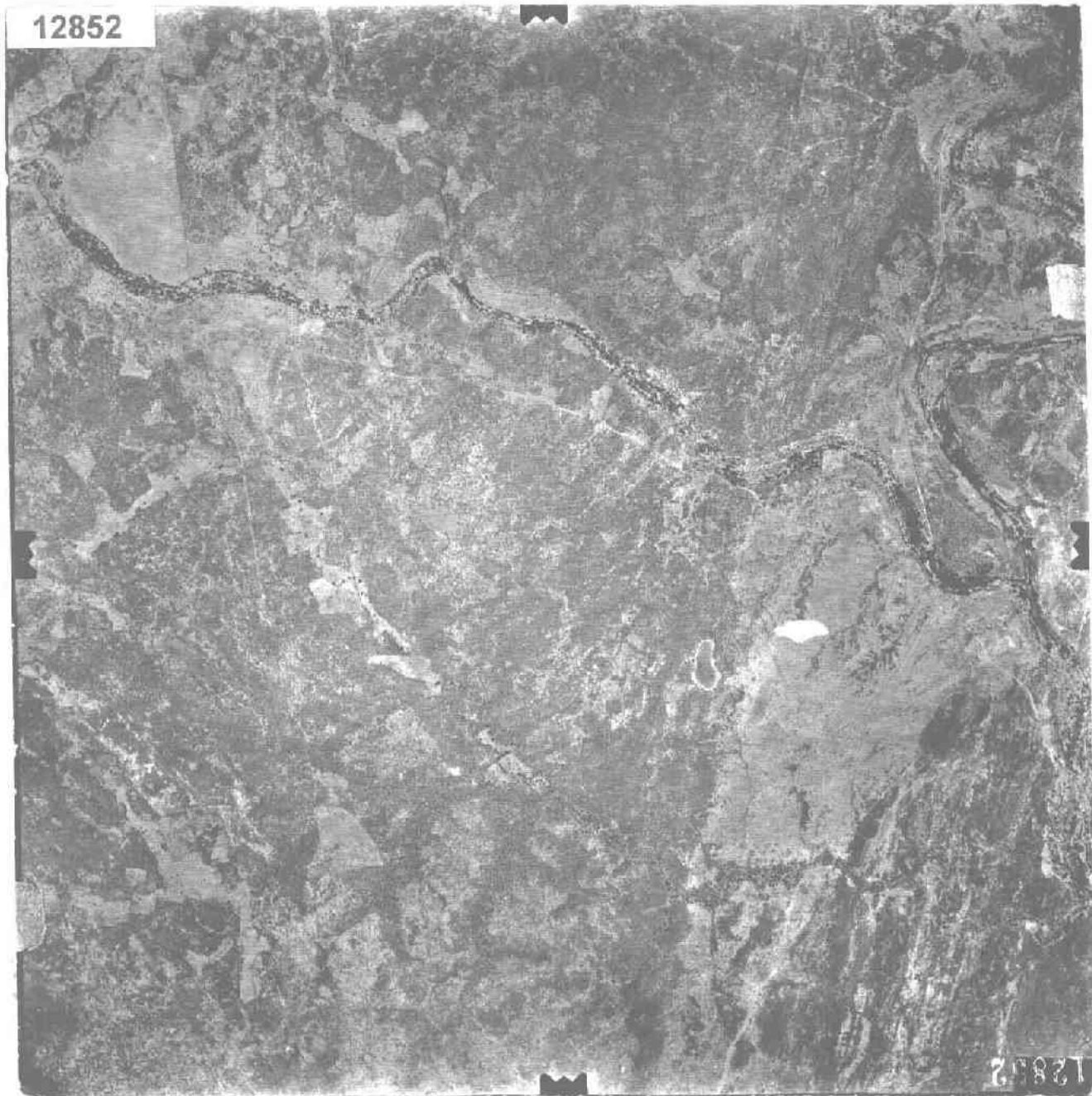


12851



12851

12852



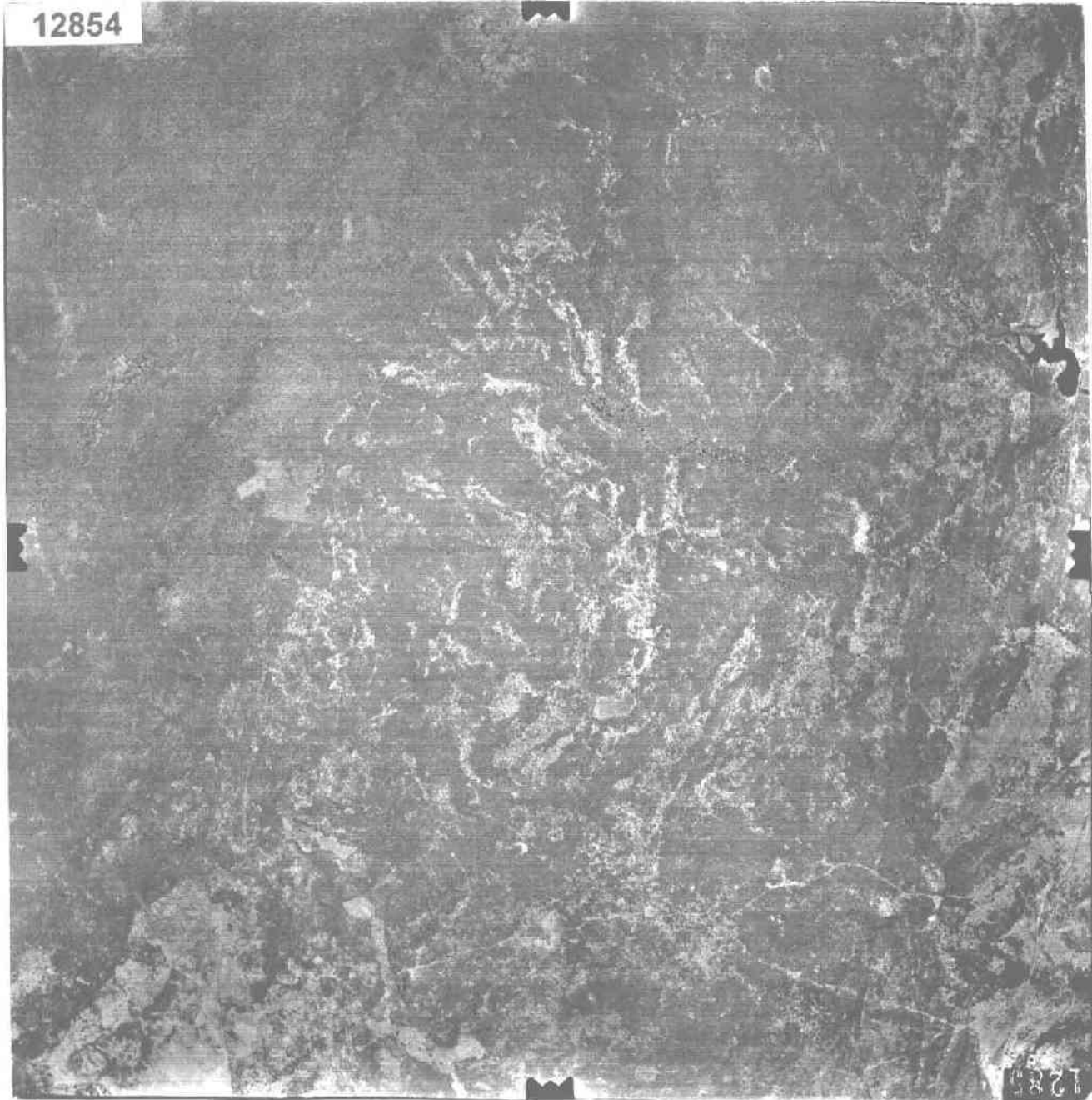
12852

12853



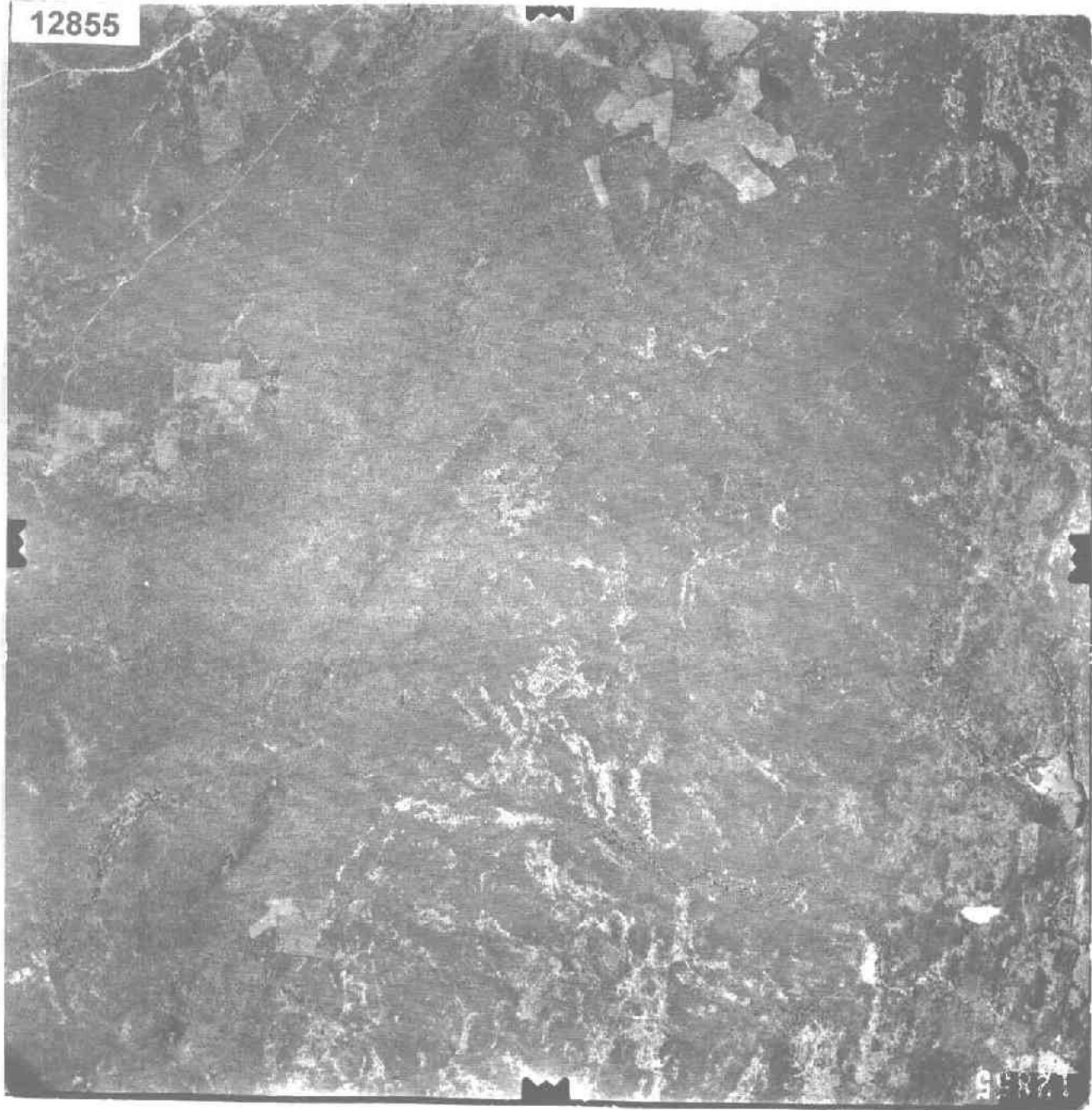
12853

12854



1285

12855

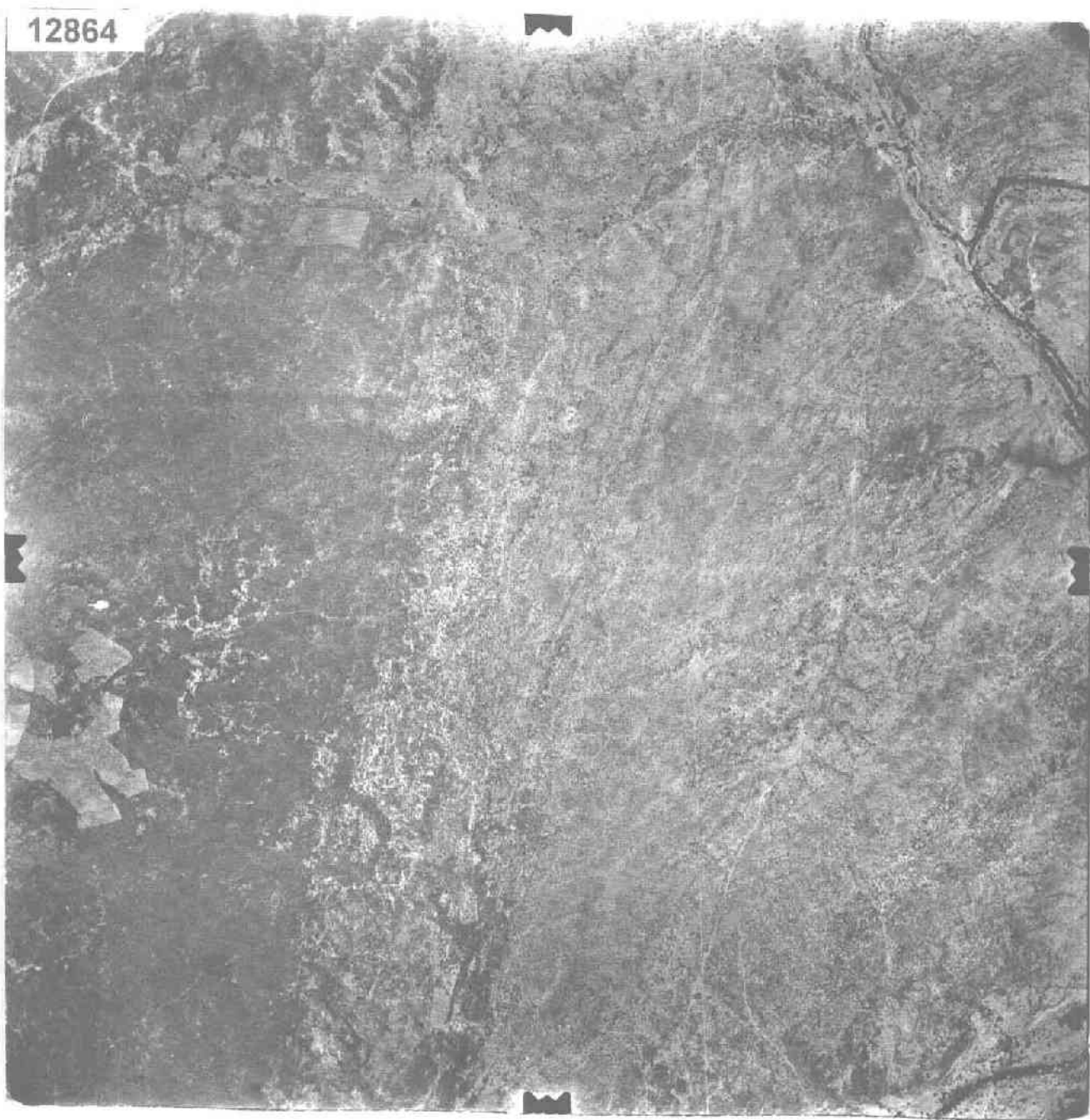


95721

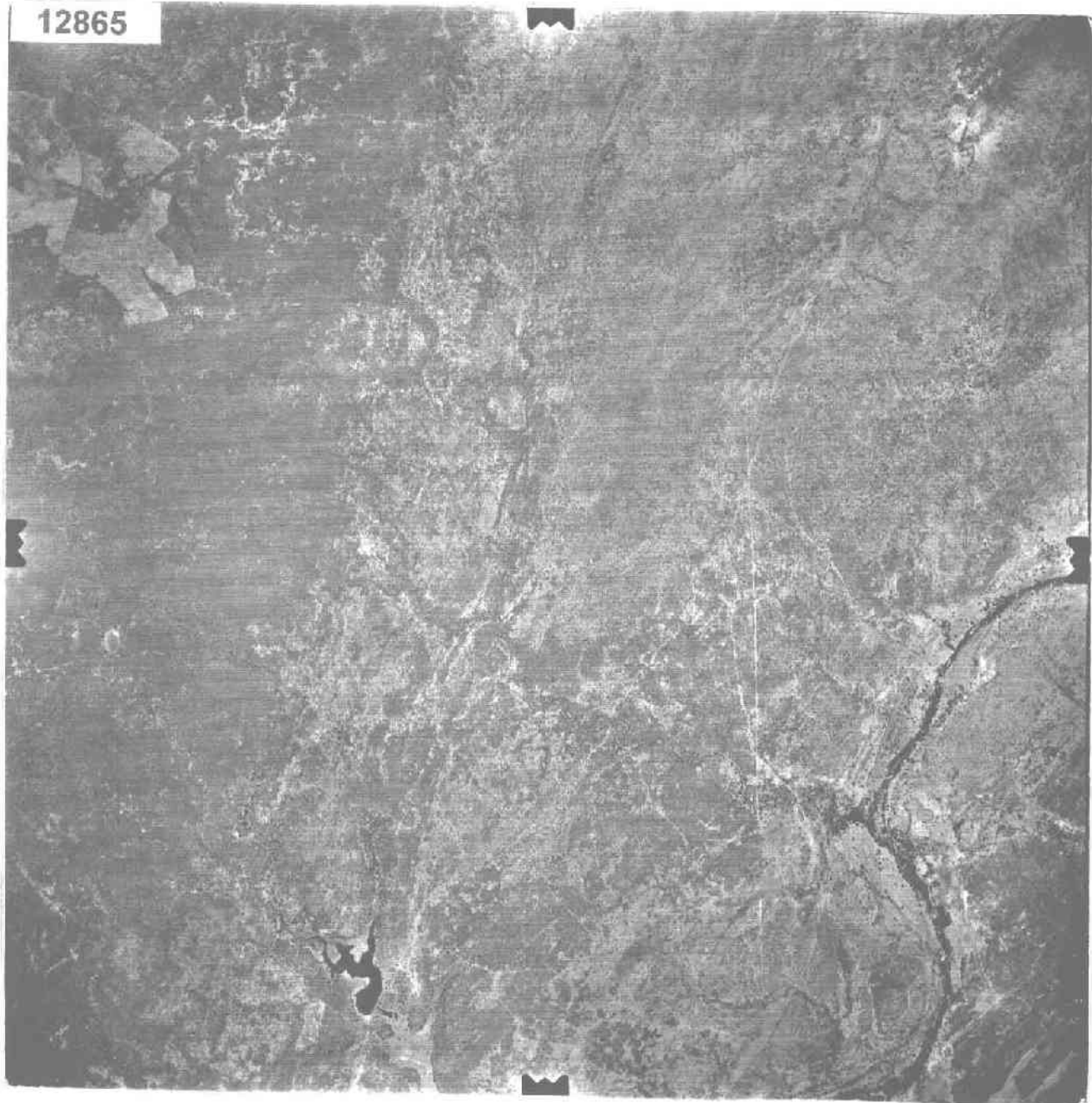
12856

12856 8

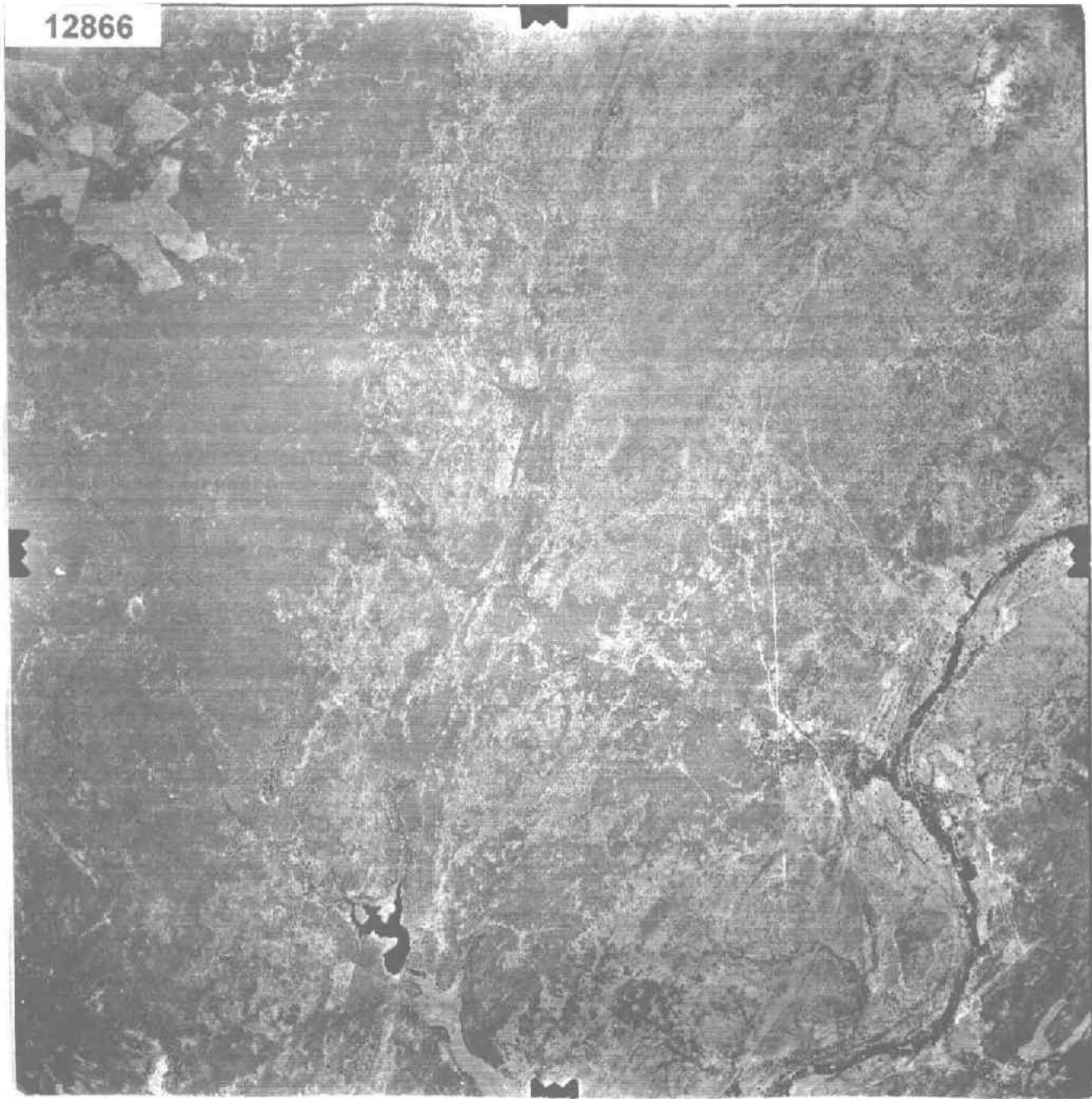
12864



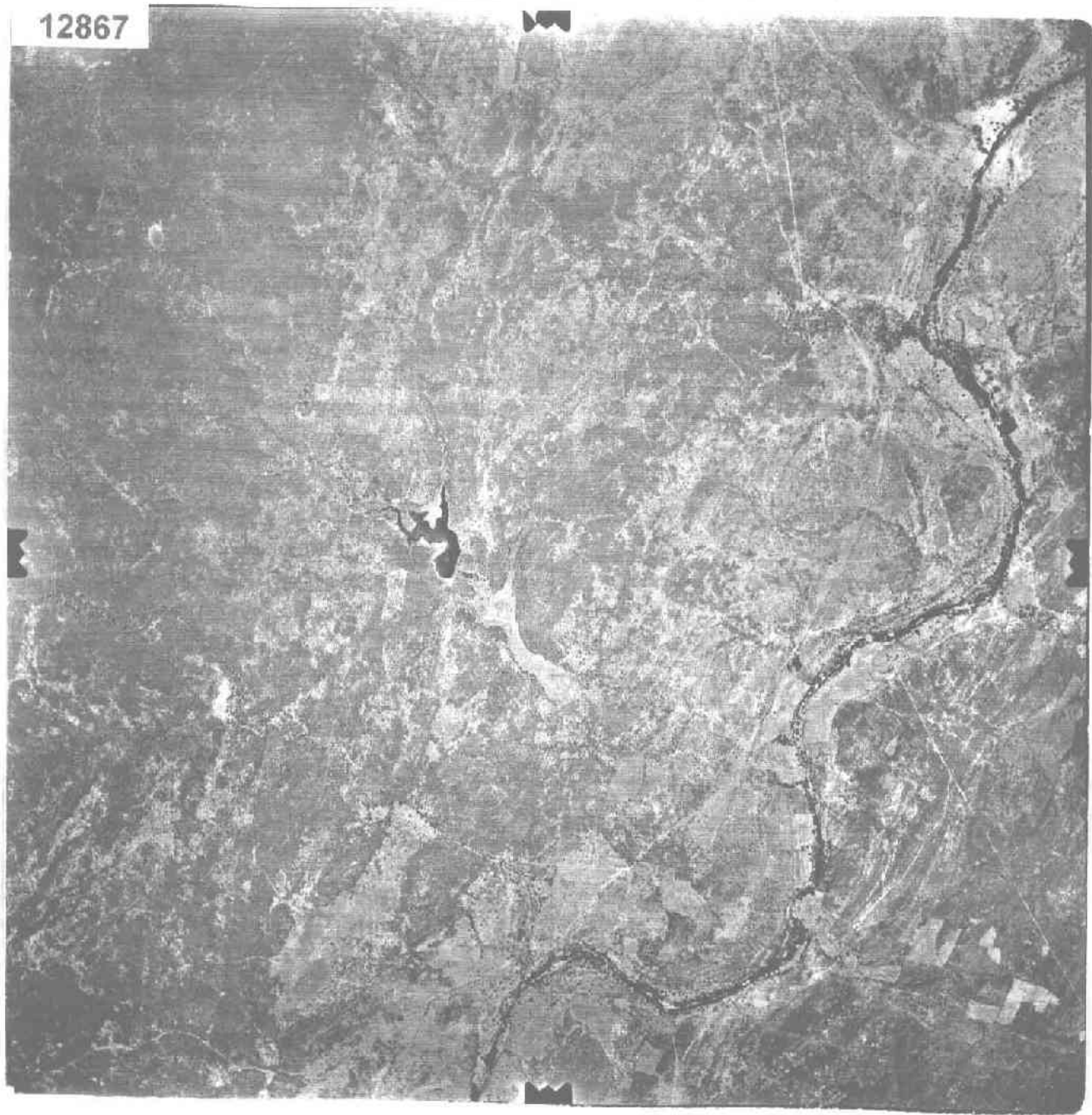
12865



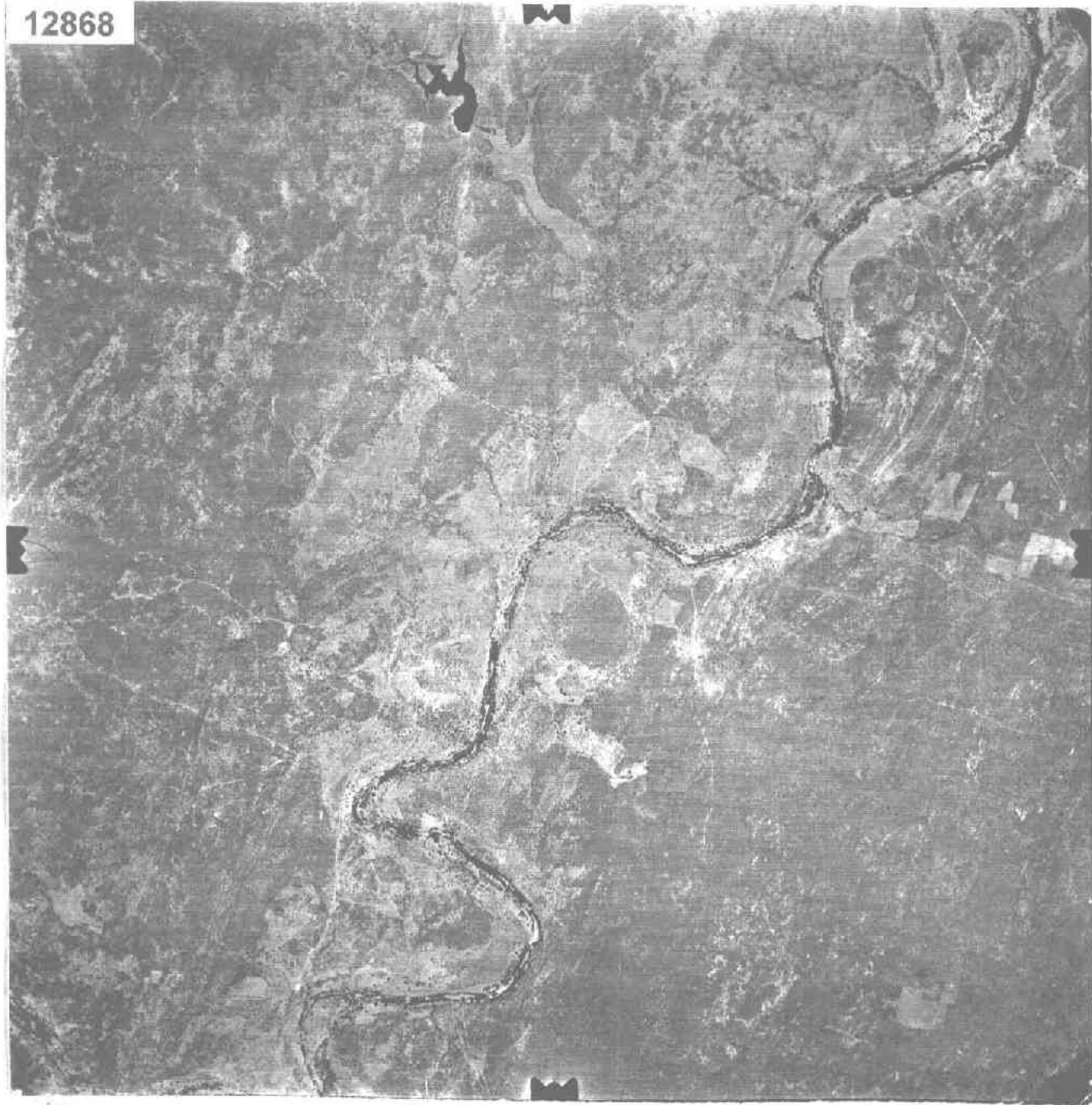
12866



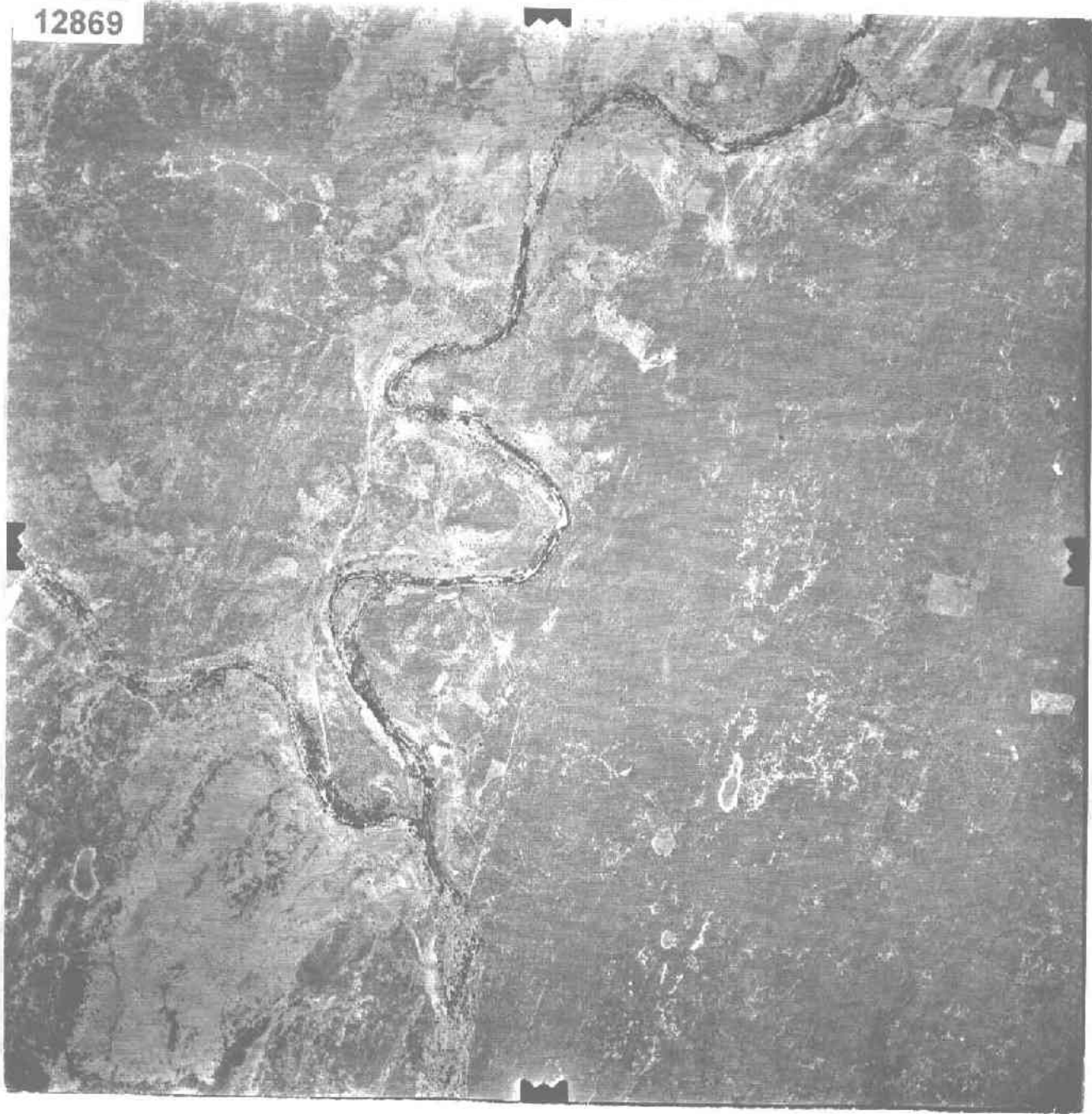
12867



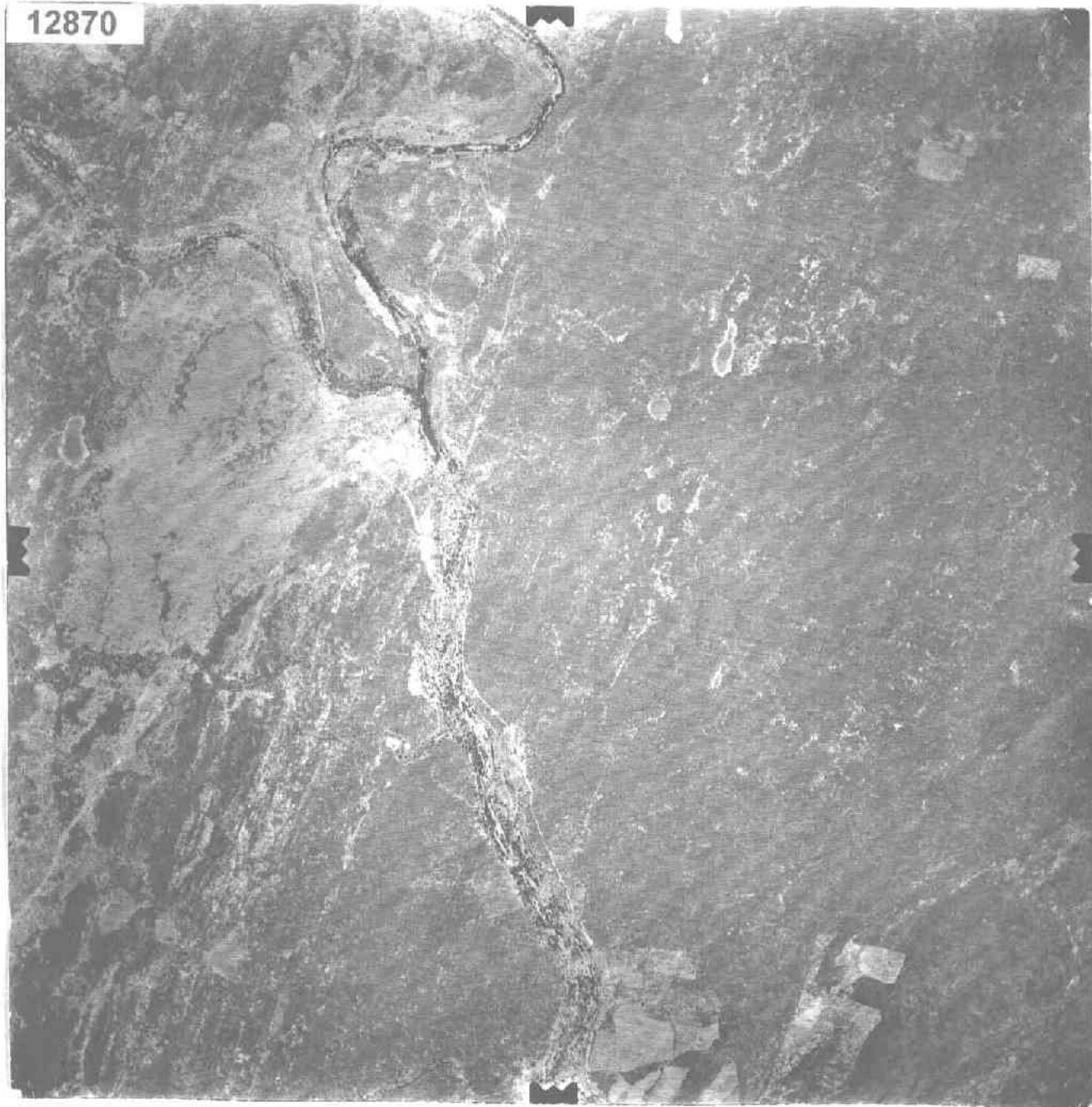
12868



12869



12870



12871



12872



12873

